

COMMUNITY NEWS FROM NORTH HERTS COUNCIL



OUTLOOK

RECYCLING AT CHRISTMAS

TREE GIVEAWAY

LEISURE CENTRES

WHAT'S ON



A TIME TO REFLECT

IN NORTH HERTFORDSHIRE

Picture credit: Brian Sawford

WINTER 2021

www.north-herts.gov.uk

FROM THE LEADER



Welcome to this edition of Outlook. I hope you've had an enjoyable summer and were able to benefit from the extended opening of the Hitchin Outdoor Pool. We've worked hard to support our leisure services as they bounce back from COVID.

My summer was spent reflecting on how we can support our district so it can continue to thrive and grow. We're about to launch our new Council Plan. This sets our vision and strategy for our towns and villages from 2022 – 2027. At the heart of everything we do will be our people, for whom we will build an environmentally and economically sustainable bright future. We'll be delivering interactive play facilities in all our

towns, driving forward our green and biodiversity strategies, creating new community facilities, and delivering a modern, accessible, and engaging council for you.

CLLR ELIZABETH DENNIS-HARBURG, LEADER OF THE COUNCIL

In this edition you'll find helpful information about the new Herts Lynx transport service (pg. 12) which will keep us connected in a more sustainable way. Be sure to check out our Christmas recycling tips too (pg. 7) for easy ways you can enjoy a low to zero waste festive season. And finally, if you or your family need extra support to stay independent in your home,



Photo: Rebecca Stewart

our Careline community alarms service could be the answer. They provide a fantastic service as shown by their recent customer satisfaction survey (pg. 11).

If you have any questions or feedback for things you'd like to see us do please let us know.

CLLR PAUL CLARK, DEPUTY LEADER OF THE COUNCIL

IN THIS ISSUE...

- PAGE. 5 Keep active with SLL
- PAGE. 6 Waste and recycling

- PAGE. 8 Tree giveaway
- PAGE. 10 Winter health
- PAGE. 14 What's on

CONTACTING NORTH HERTS COUNCIL

Most North Herts Council services can be accessed online. Find out the date of your next waste collection, apply for a licence, report an issue, register to vote or pay a bill, all through our website: www.north-herts.gov.uk



OTHER WAYS TO CONTACT US:

Phone: 01462 474000

www.facebook.com/northhertsDC

@NorthHertsDC

- North Herts Council is committed to equal opportunities and our aim is to make our services easy for all residents to use. If English is not your first language or you have difficulty reading this document please contact us to discuss how we may be able to assist you.

Please call: 01462 474000, or email service@north-herts.gov.uk
Textphone (for textphone users) on: 01462 474800



OUTLOOK is published by the Communications Team, North Herts Council, Council Offices, Gernon Road, Letchworth, SG6 3JF email outlook@north-herts.gov.uk

© Unless otherwise stated, articles and photography are copyright of North Herts Council.

Every care is taken to ensure accuracy, but the publisher or manager cannot be held responsible for errors or omissions in editorial content.

“ MAKING NORTH HERTFORDSHIRE
A VIBRANT PLACE TO LIVE,
WORK AND PROSPER ”

Council outlines priorities in new plan

We have launched an ambitious new Council Plan for the period 2022 – 2027, outlining a new vision and priorities for the next five years.

The plan outlines our vision to **put people first and deliver sustainable services, to enable a brighter future together.**

The plan was approved at Council on 23 September and is available on our website: www.north-herts.gov.uk/councilplan



Priorities for North Herts:

Our key priorities to deliver our ambitions for North Herts are:

People First

People make North Herts work. We value all our residents, businesses, staff, contractors, councillors, and other partners, and place them at the heart of everything we do.

Sustainability

We recognise the challenges our towns and district as a whole face and are committed to delivering services which are relevant and sustainable. In doing so we will place our environmental responsibilities, as well as sound financial planning, at the centre of our policy making.

A Brighter Future Together

We are far-sighted and plan for the long term to secure the best outcomes for our people, towns and villages, and the local economy, ensuring North Herts continues to thrive.



We have identified the following **key themes** which we will focus on during the next five years:

Our Environment

North Herts is home to vital chalk streams and grasslands, ancient hedgerows and woodlands, and parts of the west of our district fall into the Chilterns Area of Outstanding Natural Beauty. We all have a duty to protect and care for these environments.

We declared a climate emergency in May 2019, which commits us to take urgent action to address the causes of climate change across the district. Since then we've developed and begun implementing our Climate Change Strategy, with the aim of reducing carbon emissions to meet our net zero targets.

Our Services

We are an open and welcoming council, accessible to all our residents 24/7. We've started a transformation programme which will help residents access council services more easily, when they want to, in the most convenient way to them.

We value what you have to say about our policies and plans, so we have set up a number of panels on the topics of Environment, Community and Place to gather ideas and feedback. The panels meet several times throughout the year and everyone is welcome.

Our Local Economy

Our towns and villages are the lifeblood of North Herts and we are committed to supporting them to grow and thrive. We will work with partners on town centre regeneration and on local projects which will bring jobs and investment to North Herts, as well as helping our towns and local businesses to recover from the impacts of the pandemic.

Our Places

We have ambitious plans to grow North Herts into a modern and thriving district, where the spaces and infrastructure we create meet the current and future needs of our people.

We want the places we create to be well-designed, to reflect the local landscape and character of the area, and to have the necessary infrastructure to make them sustainable. We want to ensure greater connectivity across and beyond the district through sustainable transport projects and by ensuring that walking and cycling are attractive options.

We remain committed to providing affordable housing and social housing and will continue supporting communities with Neighbourhood Plans.





SLL

Skate

LETCHWORTH

SAT 20 NOV 21 - SUN 2 JAN 22

Get festive at Letchworth Outdoor Pool, the covered real ice rink is back on the terrace this Christmas! For further information and bookings, please visit our website.

Book Online

www.sll.co.uk/skateletchworth



“

“Our kids enjoy swimming at the Royston swimming pool and love their swim instructor.”

Nick ”

“

“It’s been amazing coming almost every morning for the Hitchin Outdoor Pool, we love it.” Kim

”

KEEP ACTIVE WITH SLL

Winter is approaching, there’s a chill in the air and the nights are drawing in, but that’s no excuse to stay on the sofa! There are plenty of activities to keep you active at your local leisure centre. Stevenage Leisure Limited (SLL) on behalf of the council, offer a range of fantastic leisure facilities to help keep everyone active and healthy.

North Herts Leisure Centre in Letchworth, Hitchin Swimming Centre, and Royston Leisure Centre have something for everyone. The gyms have a wide range of cardio and resistance equipment and with the use of Technogym’s mywellness cloud, it’s easy to keep track of your fitness in the gym and when you’re out and about. Personal trainers are also on hand, providing advice and motivation to help you reach your desired goal.

If group exercise is more your thing, with a wide range of workout classes available, seven days a week, you will be sure to find a class to suit you, whether it be an early morning circuit training session, or a yoga session to help you unwind. For those looking for a more competitive sport, badminton, table tennis and squash courts can be hired for a game with family, friends or

colleagues. For those keen to get involved in team sports might want to try 5-a-side football, netball or basketball on the indoor courts.

Swimming is a great way to exercise for the whole family and it doesn’t matter what the weather outside is doing! Whether you prefer to take the plunge with an early morning lane swim session or splash about with the whole family in a weekend fun session, SLL’s pool timetables offer a great range of activities. Anyone on the AquaEd swimming lesson scheme can practice their skills outside of their lessons with discounted access to the public swimming sessions. The AquaEd swimming lesson scheme provides lessons for all ages, from just six months to adults and you can enrol at any time.

“

“The staff at Royston Leisure Centre are fantastic at motivating me in the gym and are very knowledgeable.” Joe

Another fun activity for the whole family is returning to Letchworth Outdoor Pool this year – Skate Letchworth is back for the festive season! The state-of-the-art real ice rink returns from 20 November 2021 until Sunday 2 January 2022 and promises to deliver a magical and festive experience for all, whether you are a complete novice or a pro skater. Our café will also be serving a range of festive hot food and drinks. Booking online is recommended, for more information visit www.sll.co.uk/skateletchworth



WASTE & RECYCLING

Bin Collections

We would like to thank you for your patience during the last few months. Unfortunately, due to a significant increase in waste and recycling volumes, combined with the national driver shortage affecting our contractor, Urbaser, some residents have been experiencing a disruption to their collections.

Not having your bin collected as planned is frustrating and we'd like to apologise for the inconvenience this has caused. We are working hard behind the scenes with Urbaser to manage this issue and ensure you get the service you expect.

We would like to thank our bin crews for the professionalism and commitment they have demonstrated throughout the pandemic and for continuing to provide this essential service.

Christmas Tree-cycling

For many people, the Christmas tree is the centrepiece of their festive makeover and a real tree is a must!

Fortunately, real Christmas trees can be effectively recycled – shredded into wood chippings, which are then used in parks, schools and woodland areas or turned into compost. In the process having a positive impact on the environment we all live in.

Volunteers from Garden House Hospice Care will be collecting Christmas trees again between 4 and 9 January for a minimum donation of £10. Last year they collected over 800 trees and raised over £13,000 – all of which went to providing care and support to patients with life-limiting illnesses. Visit www.ghhospicecare.org.uk to register for your collection.

Alternatively, if you subscribe to our Garden Waste Collection Service, you can leave your real Christmas tree out next to your brown bin for collection on your usual collection day.



Reduce your food waste this autumn

It's that time of year when the nights are drawing in, it's getting colder and it's all about hearty comfort food. In other words, it's the season for soups and stews! Root veg is in season now, why not see what veggies you can buy without plastic packaging.

UK households throw away seven million tonnes of edible food each year. Your food waste collections ensure that any leftovers are composted, but why not follow these tips to reduce your food waste in the first place and save money at the same time!



Ugly veg is your friend

Help reduce food waste by embracing imperfect produce and seeking out cheaper wonky veg boxes.

Love your leftovers

Stews are perfect for using up your leftovers. You could even make a double batch and freeze it for a quick and easy dinner another day.

Find recipe ideas here:
www.lovefoodhatewaste.com

Use by or best before?

It's always worth remembering the difference between two key phrases: use by and best before. Use by relates to safety, whereas best before relates to quality. Many products with best before dates are thrown away unnecessarily, as people think they are inedible. It's worth inspecting them to see if they can still be used.

Bought too much?

Unfortunately, around this time of year more families might be feeling the financial pinch. If you've bought too much food, why not donate it to your local food bank? Search online to find your nearest place to donate.



Christmas collection dates

With Christmas around the corner, please take note of your Christmas collection dates:

| Normal Collection Day | Revised Collection Day | Normal Collection Day | Revised Collection Day |
|-----------------------|------------------------|-----------------------|------------------------|
| Monday 27 December | Wednesday 29 December | Monday 10 January | Wednesday 12 January |
| Tuesday 28 December | Thursday 30 December | Tuesday 11 January | Thursday 13 January |
| Wednesday 29 December | Friday 31 December | Wednesday 12 January | Friday 14 January |
| Thursday 30 December | Tuesday 4 January | Thursday 13 January | Saturday 15 January |
| Friday 31 December | Wednesday 5 January | Friday 14 January | Monday 17 January |
| Monday 3 January | Thursday 6 January | Monday 17 January | Tuesday 18 January |
| Tuesday 4 January | Friday 7 January | Tuesday 18 January | Wednesday 19 January |
| Wednesday 5 January | Saturday 8 January | Wednesday 19 January | Thursday 20 January |
| Thursday 6 January | Monday 10 January | Thursday 20 January | Friday 21 January |
| Friday 7 January | Tuesday 11 January | Friday 21 January | Saturday 22 January |

Normal collections will resume on Monday 24 January 2022.

HAVE YOURSELF AN ECO-FRIENDLY CHRISTMAS

Follow our simple tips on everything from buying presents to reducing food waste during the festive period!

Those Christmas lights...

If you're replacing your Christmas lights, opt for LED lights to save energy and money! Consider setting your lights on a timer or turn them off at night to save energy and opt for solar lights outdoors.



Driving home for Christmas...

If you are travelling to see loved ones or to do some Christmas shopping, consider sharing lifts or using public transport to reduce your carbon footprint. If you're not travelling too far, consider biking or walking and enjoy the fresh air!



I don't want a lot for Christmas...

Unwanted gifts require energy and resources to produce and often end up being wasted and thrown in landfill.



Consider gifting an experience or making your loved ones homemade gifts. Planning ahead, buying less and shopping local can all help lower your carbon footprint and reduce waste.

Eat, drink and be merry...

It's estimated that up to 10 million turkeys are eaten in the UK over the festive period each year. The key to a more sustainable Christmas dinner is to serve smaller portions of meat and ramp up the delicious veggie dishes that we serve alongside it.



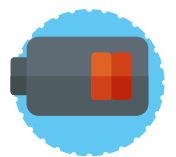
Oh the weather outside is frightful...

Christmas jumpers are a fun and festive way to keep warm (and can help lower your heating bills!). If you are looking to don a festive outfit this year, why not take an old plain jumper and test out your sewing skills, or source a festive outfit secondhand.



Santa Claus is coming to town...

Taking the time to 'buy better' can have long term positive impacts on the environment. Look for gifts which are battery-free or consider buying a rechargeable set to reduce the need for single-use ones.



Wrapping paper is a massive contributor to waste at Christmas. Look for reusable gift bags or try Furoshiki - the Japanese concept of using decorative fabric to wrap gifts. Choose eco-friendly Christmas crackers and avoid products that contain disposable plastic gifts.

DIY Christmas decor...

Using holly, mistletoe and foliage to make natural Christmas decorations is a great way to reduce waste and make your home smell great too!



Hertfordshire rights of way Google map passes one million views

The Google map of public rights of way in Hertfordshire, published by Hertfordshire County Council less than two years ago, has now been viewed more than one million times.

Since the start of the pandemic, the rights of way network has been extremely popular, and use of this tool really took off during the first lockdown. The map can be easily loaded onto your smartphone, making it simple to follow your position on a map as you go. This is the perfect way to help you find and follow the routes close to your home, and to explore hundreds of kilometres of rights of way across North Herts.

The rights of way network is a hugely valuable asset, providing endless opportunities for people to get out and active in the countryside and improve their health and wellbeing.

To find the Google map and try it out, visit www.hertfordshire.gov.uk/rowmap



OUR 10,000 TREE GIVEAWAY - EXPRESS YOUR INTEREST NOW

We are giving away up to 10,000 free tree saplings to people who live in North Herts this autumn. Each tree planted locally will help to tackle climate change in the district and benefit local biodiversity for years to come.

If you're interested in a sapling, live in the district and have a suitable place to plant a tree, please register your interest so that we can distribute a tree to you this autumn.

Tree species will include field maple, silver birch, common white birch, hornbeam, hazel, common hawthorn, beech, sweet cherry, bird cherry, mountain ash and lime. Unfortunately, we will not be able to fulfil requests for specific species of tree, however you can specify that the sapling is for a small, medium, or large area – based on the space you have available.

It is important to find the right spot for your tree. It is best to set them back from roads, boundaries, and buildings so that they are not a nuisance as they grow. You can find great advice online for the best places to position your tree such

as on the Royal Horticultural Society's website www.rhs.org.uk which includes advice on what locations are best and how to plant a tree.

If you would like one of our free saplings, please email Green.Space@north-herts.gov.uk with the following information:

- Your full name, postal address, and email address
- Whether you would you like a tree that can grow in a small, medium, or large space

Once you have sent your request you will receive a receipt email, and if successful in securing a tree sapling, more information about how to collect your tree will be sent to you.

“

Each tree planted locally will help to tackle climate change in the district and benefit local biodiversity for years to come.

”



Changes to verge mowing are coming to encourage more wildflowers and insects



To encourage biodiversity and reduce our carbon footprint, from next year we will be taking a new approach to how we manage the grass verges next to roads. We will be reducing how often we mow the verges in Hitchin, Letchworth, Baldock and Royston to allow new species to flourish and use less fuel, producing less carbon. Road verges are something most of us pass by every day. These often overlooked areas already support almost half of the UK's wildflower species. Road verges can act as corridors to allow insects and mammals to move around safely, providing a great opportunity to help improve biodiversity.

Cutting road verges too often means that wildflowers never get established and do not have a chance to set their seed. However, if verges are left uncut, species begin to decline as more aggressive plants will take hold and diversity will also be reduced. To maintain a compromise between the biodiversity benefits and the need to maintain the urban environment, the number of grass cuts per year will be reduced to a maximum of nine visits annually.

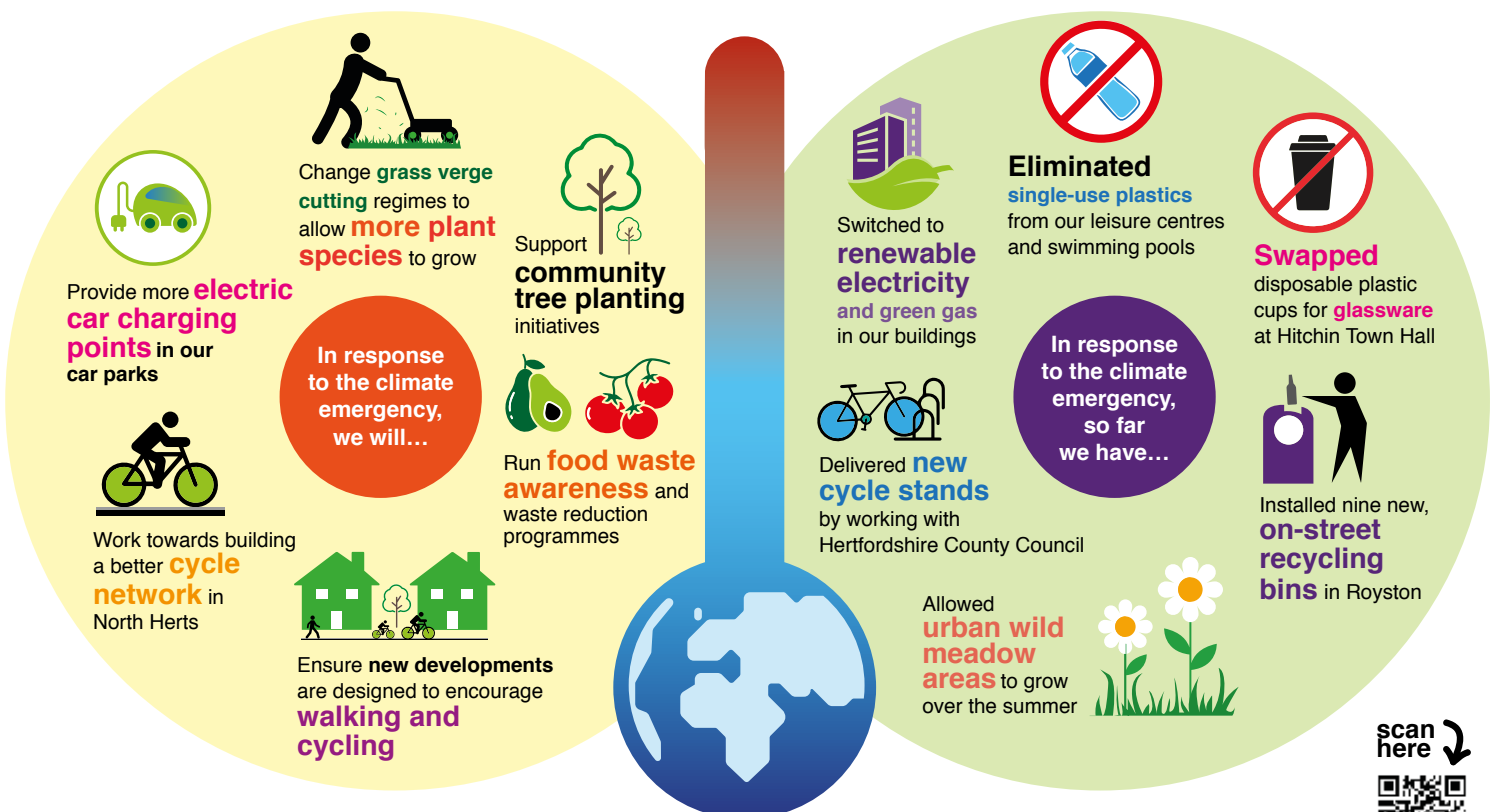
We will be balancing improvements to biodiversity with practical needs to ensure they are not a hazard

to pedestrians or vehicles, so that pathways, roads and visibility are not obstructed.

We hope that over time our grass verges will support a wide range of flora and fauna and will provide a point of interest by allowing the wildflowers to flourish. Keep an eye out for these roadside mini meadows.



In 2019, North Herts Council declared a **climate emergency**. Here's our response:



Check out our website for more information on our Climate Change Strategy: www.north-herts.gov.uk/climatechange



Winter health help the NHS help you



Winter is always a busy time for the NHS and there are a huge range of services available, so knowing the best place to go to get the right help is really important. Check out www.nhs.uk for advice on symptoms and the best source of help to meet your needs.

Using the right NHS service first time is better for you and helps the NHS to make sure that resources are used in the best way.

There are things we can all do to be ready for whatever winter throws at us:

- Keep a well-stocked medicine cabinet at home.
- If invited by your GP or offered it at school, get your flu vaccination.
- Follow COVID guidance and advice, including getting your vaccine or booster when invited.
- For colds and flu it is best to rest, keep warm, drink plenty of fluids and take painkillers such as paracetamol and ibuprofen.

- For sickness and diarrhoea, rest and drink plenty of fluids. Wash your hands thoroughly and regularly and stay away from care homes and health settings when you are unwell, and for 48 hours after your symptoms end.
- Visit your pharmacist (chemist) for advice on medicines or when you are suffering from common ailments that don't need to be seen by a nurse or doctor, such as coughs or colds.

If you have an illness that just won't go away, make an appointment to see your GP or practice nurse or speak to them on the phone.

For 24-hour urgent health advice, including mental health help, visit 111.nhs.uk or ring **NHS 111**.



Sign up to receive crime alerts on the go

Hertfordshire Police has launched a crime prevention app called OWL, so you can now sign up to receive instant notifications about local crime, scams, and advice on crime prevention straight to your phone or tablet.

OWL is the largest neighbourhood watch network in the country, with 1 in 3 Hertfordshire homes signed up to the scheme. The app will send you notifications based on your postcode and current location, so you stay informed wherever you are.

The most important alerts such as a burglary, car crime, robbery or missing person appeal will arrive as an instant notification, while you will find anything less urgent inside the app to be read at your leisure.

As well as alerts, users will be able to see contact details for their local policing team and join other watches including dog watch, business watch and rural watch. You will also be able to contact Herts police online or via the web chat facility and let the police know what you think they should be working on via the feedback platform, echo.

To get the app, search the App Store or Google Play for 'OWL crime alerts.' You can also sign up to receive OWL messages via www.owl.co.uk/herts



HELP FOR ROUGH SLEEPERS OVER WINTER

We work with local organisations including the homeless shelter, Haven First, to provide year-round support and emergency accommodation to single homeless people in North Herts. During the coldest winter months, extra provision is made for people sleeping rough in freezing conditions, with additional overnight beds and on-site support.

For more information, please visit the Housing Advice and Homelessness Support pages on our website. You can also access our online portal to contact us if you are worried about your housing situation: www.north-herts.gov.uk/homeless

If you have any concerns about someone sleeping rough in the district, please report this to StreetLink on their website: www.streetlink.org.uk. They will notify us and our outreach service, so that we can find the individual and support them.

Herts Careline

During the pandemic, the council's Herts Careline assistive technology equipment has been a lifeline to people who live alone, and to older and vulnerable members of the community.

It has been a challenging year for everyone, and the Careline service has adapted to ensure it can still provide support to both new and existing customers. Its latest set of customer satisfaction survey results is a testament to the team's dedication and commitment.



Find out how the Careline service can support independence and help manage risks in the home by calling **0300 999 2 999** or visit www.care-line.co.uk



97% would recommend to a friend or relative



92% feel more independent and in control having the Herts Careline service



95% feel more reassured having the Herts Careline service

Herts Careline Customer Satisfaction Survey Results 2020-21



96% say it gives friends / family peace of mind knowing they have the Herts Careline service



92% say the advice they receive from the call operators is 'excellent' or 'good'



89% say the advice they receive from the customer support team is 'excellent' or 'good'

HERTSLYNX – ON-DEMAND TRANSPORT HAS ARRIVED IN NORTH HERTS

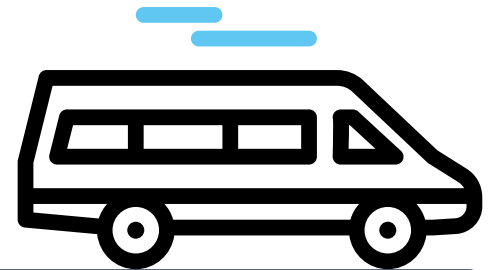
HertsLynx – a new on-demand bus service launched in Hertfordshire in September, serving villages in North and East Herts as well as fixed destinations in six key hub towns – Stevenage, Hitchin, Letchworth, Baldock, Royston and Bishops Stortford.

The HertsLynx service is designed to improve connections between rural areas and town centres, as well as expand access to employment, education, healthcare and shopping.

Passengers can use HertsLynx for travel anywhere in the Free-Floating Operating Zone. There are no fixed routes for the service, instead passengers can be picked up and dropped off at a vast number of stops within this Zone. Passengers are also able to travel from the Free-Floating Operating Zone to designated locations in the Key Hub Towns.

Travel is permitted between Key Hub Towns but not for journeys between multiple designated locations in one Key Hub Town.

The service operates from 7am – 7pm, Monday to Saturday and 10am – 4pm on Sundays and bank holidays. Journeys can be booked in real-time or in advance for future journeys via the Intalink App, website or by phone. For more information visit: www.intalink.org.uk/hertslynx



Council Meetings

All meetings are held at 7.30pm unless specified below.

Please check our website for venue details www.north-herts.gov.uk



| DATE | COMMITTEE |
|------------|---|
| 04/11/2021 | Planning Control Committee |
| 08/11/2021 | Cabinet Panel on Community |
| 11/11/2021 | Council |
| 16/11/2021 | Cabinet Panel on Environment |
| 18/11/2021 | Planning Control Committee |
| 24/11/2021 | Cabinet Panel on Housing |
| 30/11/2021 | Hitchin Committee |
| 01/12/2021 | Royston and District Committee |
| 02/12/2021 | Planning Control Committee |
| 06/12/2021 | Baldock and District Committee |
| 08/12/2021 | Letchworth Committee |
| 09/12/2021 | Southern Rural Committee |
| 13/12/2021 | Cabinet Panel on Housing, Strategic Planning and Transport 3.00pm |
| 14/12/2021 | Overview and Scrutiny |
| 15/12/2021 | Baldock and District Committee 10.00am |
| 16/12/2021 | Planning Control Committee |
| 21/12/2021 | Cabinet |

| DATE | COMMITTEE |
|------------|--|
| 13/01/2022 | Planning Control Committee Council Tax Setting 5.00pm |
| 17/01/2022 | Finance, Audit and Risk Committee |
| 18/01/2022 | Overview and Scrutiny |
| 19/01/2022 | Planning Control Committee |
| 20/01/2022 | Council |
| 25/01/2022 | Cabinet |
| 27/01/2022 | Planning Control Committee |
| 31/01/2022 | Cabinet Panel on Community |
| 02/02/2022 | Cabinet Panel on Place |
| 07/02/2022 | Licensing and Regulation Committee |
| 09/02/2022 | Planning Control Committee |
| 10/02/2022 | Council |
| 22/02/2022 | Cabinet Panel on Environment |
| 23/02/2022 | Highways Liaison 7.00pm |
| 24/02/2022 | Planning Control Committee |
| 28/02/2022 | Council Tax Setting Committee 5.00pm |



Discover the wildlife on our doorstep at the Nature in Focus exhibition

A new free exhibition showcasing photographs of local wildlife, plants and landscapes taken by Brian Sawford is now on show at North Hertfordshire Museum. If you liked our Outlook cover photo this month then you can explore more of Brian Sawford's incredible work by visiting this exhibition in his honour.

It showcases many of the rare and beautiful wildflowers and endangered birds from North Herts, as well as the everyday natural beauty of animals and plants we have on our doorstep. The exhibition includes a few specimens from the museum's natural history collection, with a fox, a hare, a black squirrel, a baby roe deer, and a cuckoo.

Brian Sawford was a well-known local naturalist and a gifted photographer, who spent much of his long career working as a senior keeper of natural history at the former Letchworth Museum. He sadly passed away in 2020 and this exhibition

has been put together by his widow Terri and the Letchworth Naturalists in his memory.

Brian contributed greatly to the natural history of Hertfordshire through his talks, guided walks and publications. These included The Butterflies of Hertfordshire, Wildflower Habitats of Hertfordshire and Wildlife of the Letchworth Area, all illustrated with his own photographs.

Brian worked hard throughout his life to encourage others to take an interest in conserving our natural environment and inspired many local children (and their parents) through his nature club at Letchworth Museum and activities with the Letchworth Watch group.

The exhibition will run until 2 January 2022.

To plan your trip visit

www.northhertsmuseum.org

or call **01462 474554**.



Royston & Hitchin

community wellbeing days

from the North Herts Healthy Hub

FREE WELLBEING TALKS AND FAMILY ACTIVITY SESSIONS



Royston

- 3 Nov - Managing anxiety for adults
- 17 Nov - Improving physical wellbeing and ideas for being more active for adults
- 1 Dec - Introduction to mindfulness for adults
- 15 Dec - Winter crafts under 5's
- 5 Jan, 19 Jan, 2 Feb - Fun with food for under 5's

Market Hill Rooms, Fish Hill, Royston, SG8 9JL

Session times vary - please contact the hub for more info and booking.

Hitchin

- 15 Nov - Autumn crafts for under 5's
 - 13 Dec - Festive fun with food for under 5's
- Free NHS health checks for age 40 to 74 years
- Westmill Community Centre, John Barker Place, Hitchin, Herts, SG5 2PG
- Session times vary - please contact the hub for more info and booking.

Numbers are limited so must be **pre-booked** by emailing healthyhub@north-herts.gov.uk or calling **01462 474111**



WHAT'S ON

this Winter

EVENTS & EXHIBITIONS

MUSEUMS & GALLERIES

NORTH HERTFORDSHIRE MUSEUM

Brand Street, Hitchin, SG5 1HX
01462 474554

[www.north-herts.gov.uk/
museum](http://www.north-herts.gov.uk/museum)

Event details can be found at
[www.facebook.com/
northhertsmuseum](http://www.facebook.com/northhertsmuseum)

Opening times: Tues – Sat
10.30am to 4.30pm. Sunday
11am to 3pm Admission free.

**18 September 2021 –
4 January 2022**

**Nature in Focus:
photographs of the wildlife
and landscapes of North
Herts by Brian Sawford**

Brian Sawford (1940-2020) was a gifted local naturalist who contributed greatly to the natural history of Hertfordshire through his talks, guided walks and publications. The exhibition showcases many of the rare, beautiful wildflowers and endangered birds he photographed locally and reminds us of the rich biodiversity of the district.



BALDOCK

7 November
**St Marys
School
Baldock
Community
Firework Event**

Celebrate bonfire night with a bang at Baldock firework display. Wrap up warm with family and friends to watch colour and sparkles fill the sky. For more information visit [www.facebook.com/
baldockcommunityfireworks](http://www.facebook.com/baldockcommunityfireworks)

3 December
Street Food Heroes

Feeling peckish? Food stalls offering a variety of cuisines will be taking over Baldock High Street this December as they welcome Street Food Heroes. Find out more at [www.facebook.com/
streetfoodheroes1/](http://www.facebook.com/streetfoodheroes1/)

4 December
Baldock Christmas Fayre

Got some Christmas gift shopping to do? Why not shop locally and visit the Baldock Christmas Fayre, which will have a combination of Christmas craft and gift stalls. This year's Christmas Fayre will take place in the High Street and around the town. Find out more at the Baldock Events Forum website. www.baldockeventsforum.org.uk

TOWN & VILLAGE EVENTS

HITCHIN

11 November
Street Food Monthly

Your chance to experience the best in local street food in Hitchin town centre. Tickle your taste buds with a range top notch grub and drinks, plus live music to keep you entertained. Find out more at [www.facebook.com/
streetfoodmonthly](http://www.facebook.com/streetfoodmonthly)

13 November
Rotary Food & Wine Festival

Artisan food producers and street food vendors are coming to Hitchin town centre put on by Rotary Hitchin. Lots of yummy things to enjoy and discover. Find out more at [www.rotary-ribi.org/clubs/
diary.php?ClubID=1873](http://www.rotary-ribi.org/clubs/diary.php?ClubID=1873)

20 November
Hitchin Lights Switch On

Get ready to light up Hitchin at the annual switch on. Enjoy an afternoon of acts on stage, a Santa's parade and music to get you in the festive spirit. Then enjoy the beautiful lights and tree as we kick off Christmas for another year. www.hitchinherts.com/events

18 November
**Hitchin Town Hall
Mostly Comedy**

'Mostly Comedy' is set to hit the stage with a mixed bill followed by a live podcast interview. Join David Ephgrave, Simon Day, Norman Lovett for a night of laughs. Book tickets at: www.mostlycomedy.co.uk





**8 December – 22nd December
Hitchin Christmas Market**

Come down to the Market Place this winter as it hosts its annual Christmas Market. The event will be free to attend and boasts an array of Christmas market chalets. Offerings include homeware, crafts, street food, and much more! Perfect for those who like to shop local this Christmas and support our town centre.

www.hitchinherts.com/events

KNEBWORTH

**7 November
Knebworth House
Hertfordshire Half Marathon & 10k**

Take part in the Hertfordshire half marathon or 10K. This popular half marathon starts and finishes in front of the iconic Knebworth House with a course that takes participants around the beautiful surrounding rural roads. For more information and to sign up visit www.hertshalf.com

**26 – 28 November
Knebworth House
Christmas Fair**

Enjoy a weekend packed with festive shopping at the Knebworth Christmas Fair on at Knebworth Park and Barns. Spark ideas for the perfect present while enjoying festive food and drink. Get in the Christmas spirit with family and friends, sort your Christmas shopping and enjoy festive entertainment.

www.knebworthhouse.com/events/christmas-fair

LETCHWORTH

**27 November
Letchworth Christmas Lights
Switch On**

Start the Christmas countdown by coming to see the Christmas lights switch on in Letchworth. Enjoy an evening with family or friends while surrounded by twinkly lights and watch the tree glisten as it lights up. For more information, go to the Love Letchworth website www.loveletheworth.com

ST IPPOLYTS

**27 November
St Ippolyts Christmas Fair**

Get your Christmas shopping started. There will be lots of stalls from toys and games to tombola and cakes. Father Christmas will be visiting, light refreshments will be available and there will be a prize draw. For more information visit www.stippolyts-hall.co.uk



Local groups benefit from grant funding



We have recently awarded grants to a range of community groups in North Herts to help them improve our local facilities and provide essential services to our communities. Here is a roundup of some of the most recent recipients:

BALDOCK AND ASHWELL

Ashwell Playgroup was awarded £570 to assist with room hire costs for the summer term. A registered charity that has been operating since 1975, it currently has 19 children in attendance. The playgroup has been struggling due to the pandemic with months of closure, reduced numbers attending sessions and reduced opportunity for fundraising.

Magic Moments Pre-School was awarded £500 to purchase role play furniture for indoor play and a new laptop. The group is a registered charity that has been operating since 1996 and currently caters for 32 families. It has also been badly affected by the pandemic, reducing opportunities for fundraising.

Greening Ashwell, a new environmental group, was awarded a start-up grant of £250 to assist with publicity, venue hire and tree planting costs. The group, which was set up in 2020, aims to reduce the carbon footprint of Ashwell through environmental initiatives such as native tree / hedgerow planting, sowing wildflower areas and conserving native habitats, particularly on public verges and green spaces.

The Tiny T's Rainbow Fairies at the Hitchin Festival

LETCHWORTH

Make Lunch Letchworth received £940 towards the cost of food and educational activities for 32 families in the town who are selected via local schools. They distribute food and activities during school holidays to help families whose children receive free school meals and find themselves struggling during those times.

The Make Lunch idea is a national project run by charity 'Transforming Lives for Good'. The Letchworth project is being run by the New Life Church in the town centre, in partnership with St Pauls Church, Kings Community Church, Central Methodist Church and Norton Methodist Church.

HITCHIN

Hitchin Festival was awarded over £2000 to support the Hitchin Festival. The annual arts festival has been running for the last ten years, bringing together community groups, businesses and individuals. The grant was put towards creating a week-long series of events in July at The Dell Open Air Theatre. It was used to hire staging and technical equipment and to ensure the space remained safe and secure, with fencing and security present.

COCKERNHOE

Elmtree Avenue Community Field Play Area received a £2,000 grant to put towards upgrading the play equipment for children using the park. The new equipment has now been fully installed as well as new fencing around the play area as a safety precaution. Children can enjoy a new seesaw, a surf rider stand on swing, sig and sag upright twister, roundabouts and a teacup twister.



If you represent an independent and not-for-profit organisation working for the benefit of local communities in North Herts and you think your organisation could benefit from a community grant, go to our website www.north-herts.gov.uk and search 'Community Grants'.

