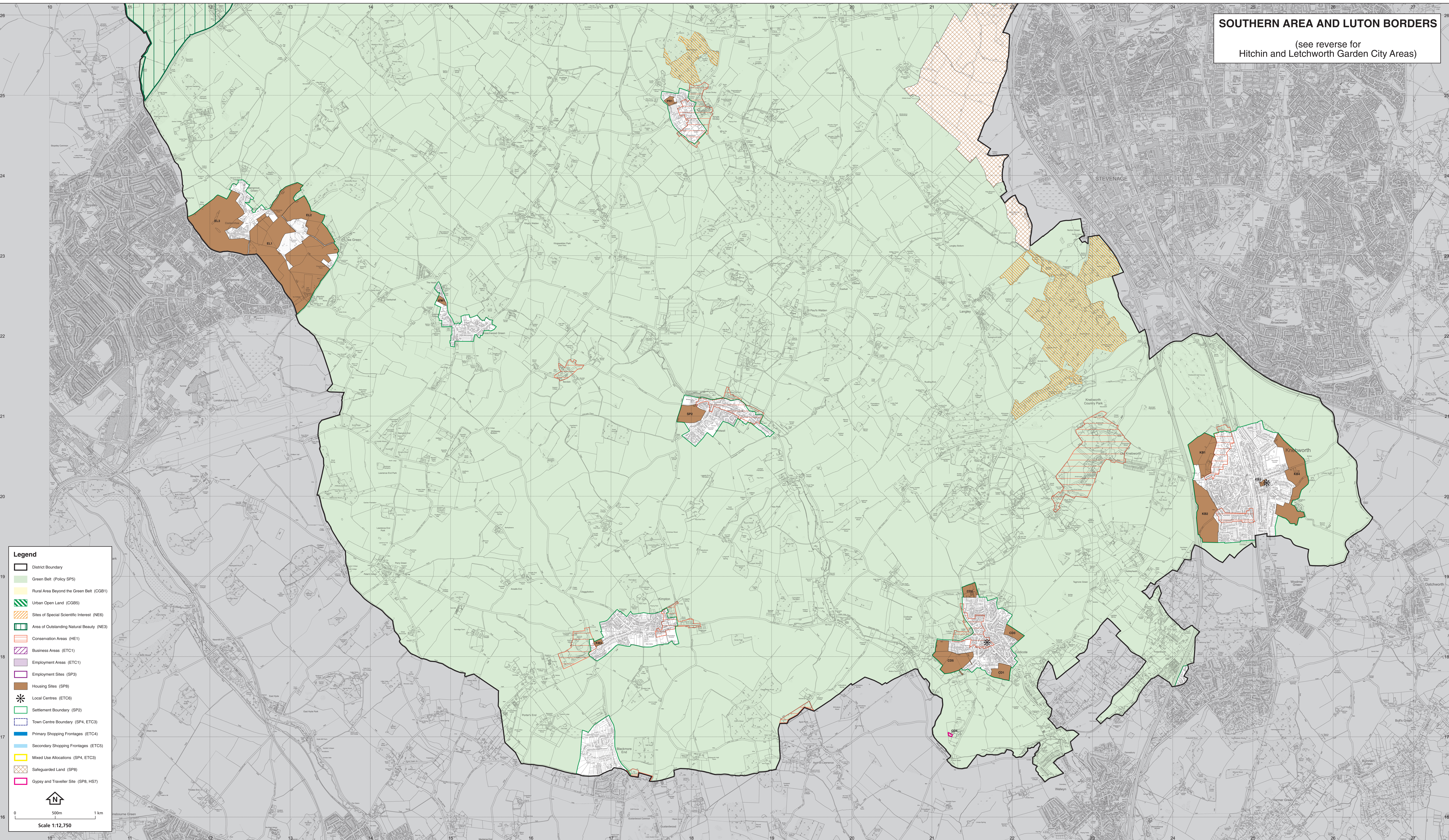


# SOUTHERN AREA AND LUTON BORDERS

(see reverse for  
Hitchin and Letchworth Garden City Areas)



**Legend**

- District Boundary
- Green Belt (Policy SP5)
- Rural Area Beyond the Green Belt (CGB1)
- Urban Open Land (CGB5)
- Sites of Special Scientific Interest (NE6)
- Area of Outstanding Natural Beauty (NE3)
- Conservation Areas (HE1)
- Business Areas (ETC1)
- Employment Areas (ETC1)
- Employment Sites (SP3)
- Housing Sites (SP8)
- Local Centres (ETC6)
- Settlement Boundary (SP2)
- Town Centre Boundary (SP4, ETC3)
- Primary Shopping Frontages (ETC4)
- Secondary Shopping Frontages (ETC5)
- Mixed Use Allocations (SP4, ETC3)
- Safeguarded Land (SP8)
- Gypsy and Traveller Site (SP8, HS7)

N

0 500m 1 km

Scale 1:12,750