

Appendix 5: SHLAA maps

The maps on the following pages detail the findings of the SHLAA for each settlement. The maps are colour coded as follows:



Site meets the tests set in the SHLAA



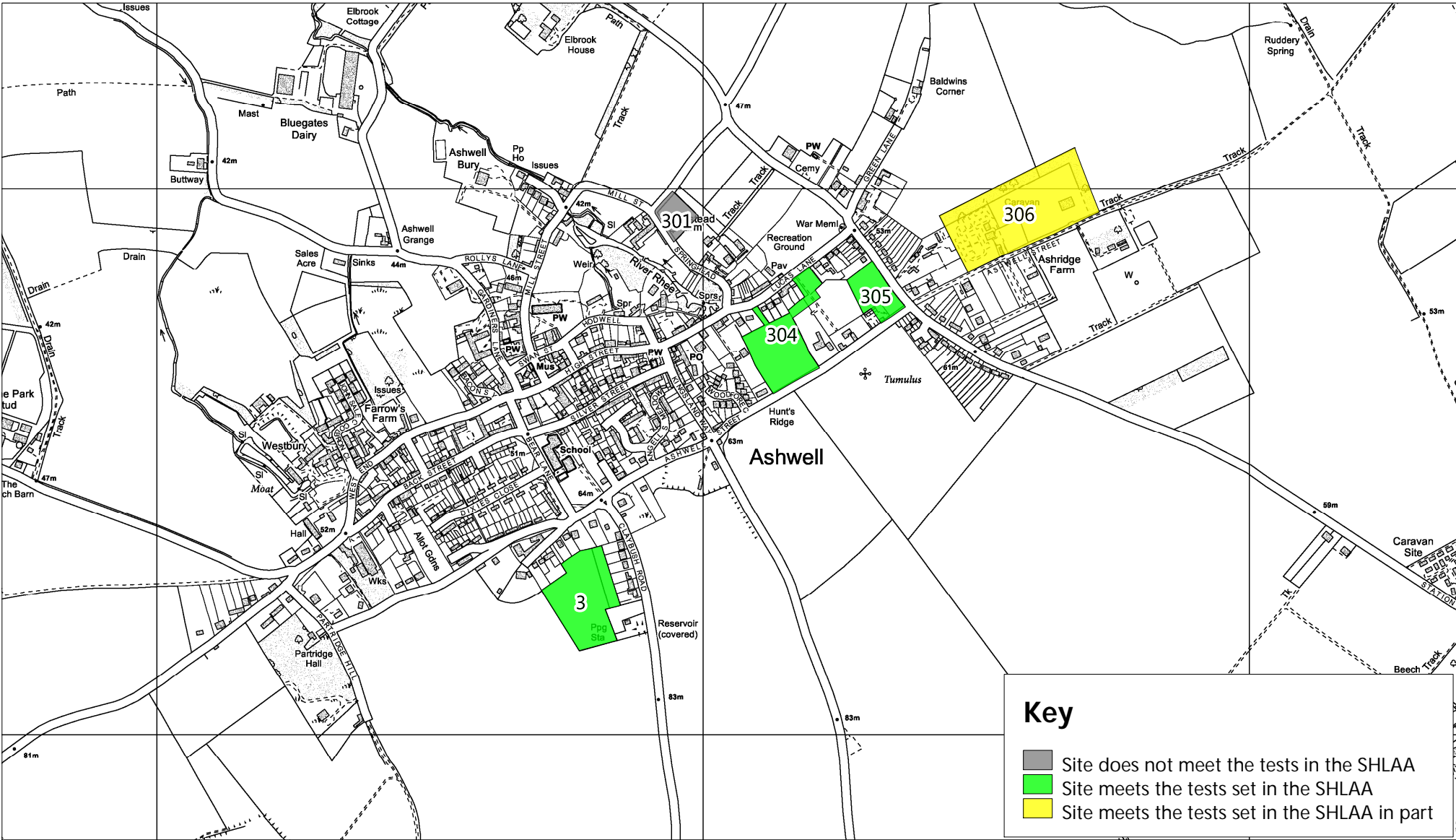
Site meets the tests set in the SHLAA in part



Site does not meet the tests in the SHLAA



NHDC SHLAA Appendix 5 - Ashwell

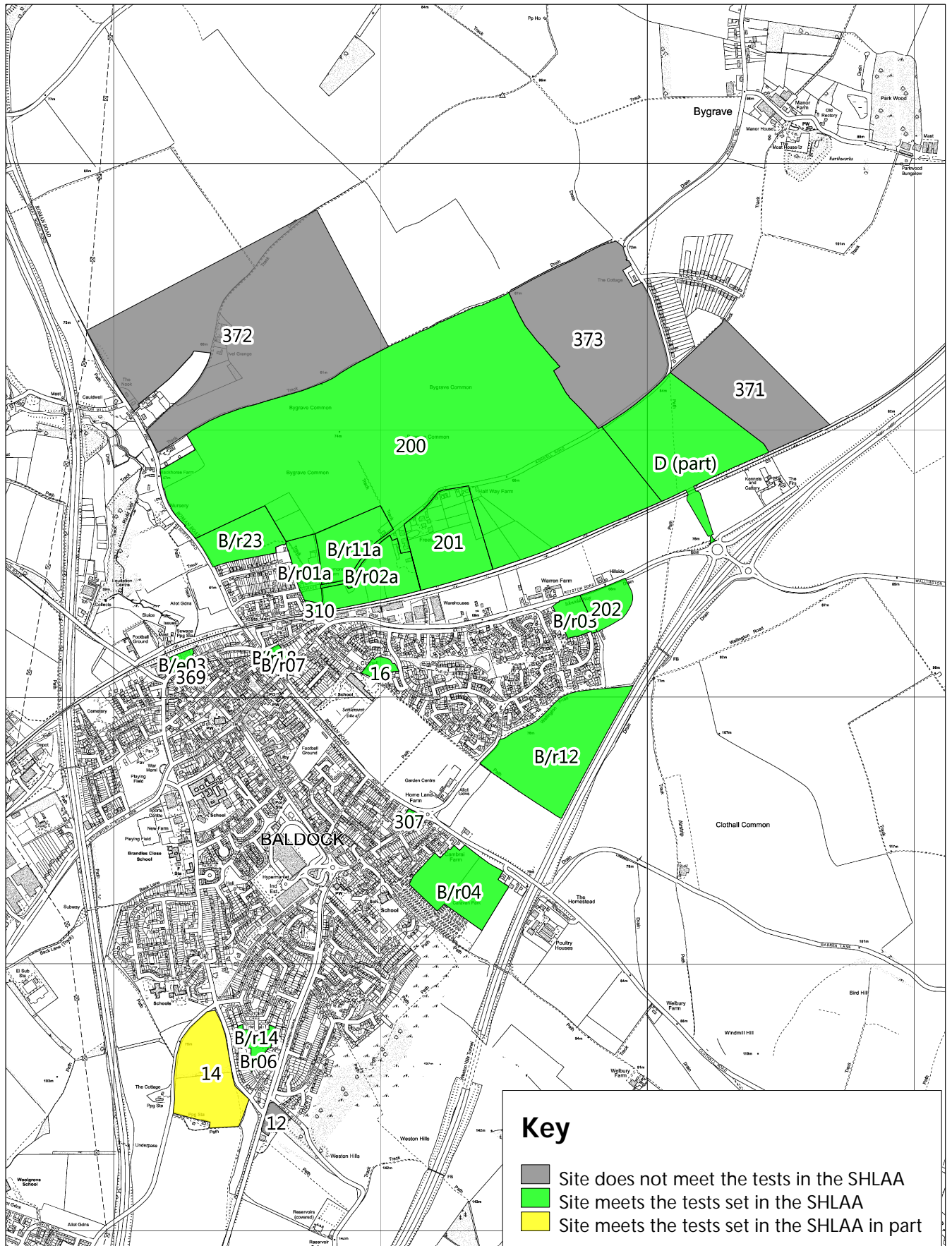


Key

- Site does not meet the tests in the SHLAA
- Site meets the tests set in the SHLAA
- Site meets the tests set in the SHLAA in part

Scale: 1:10000
Date:



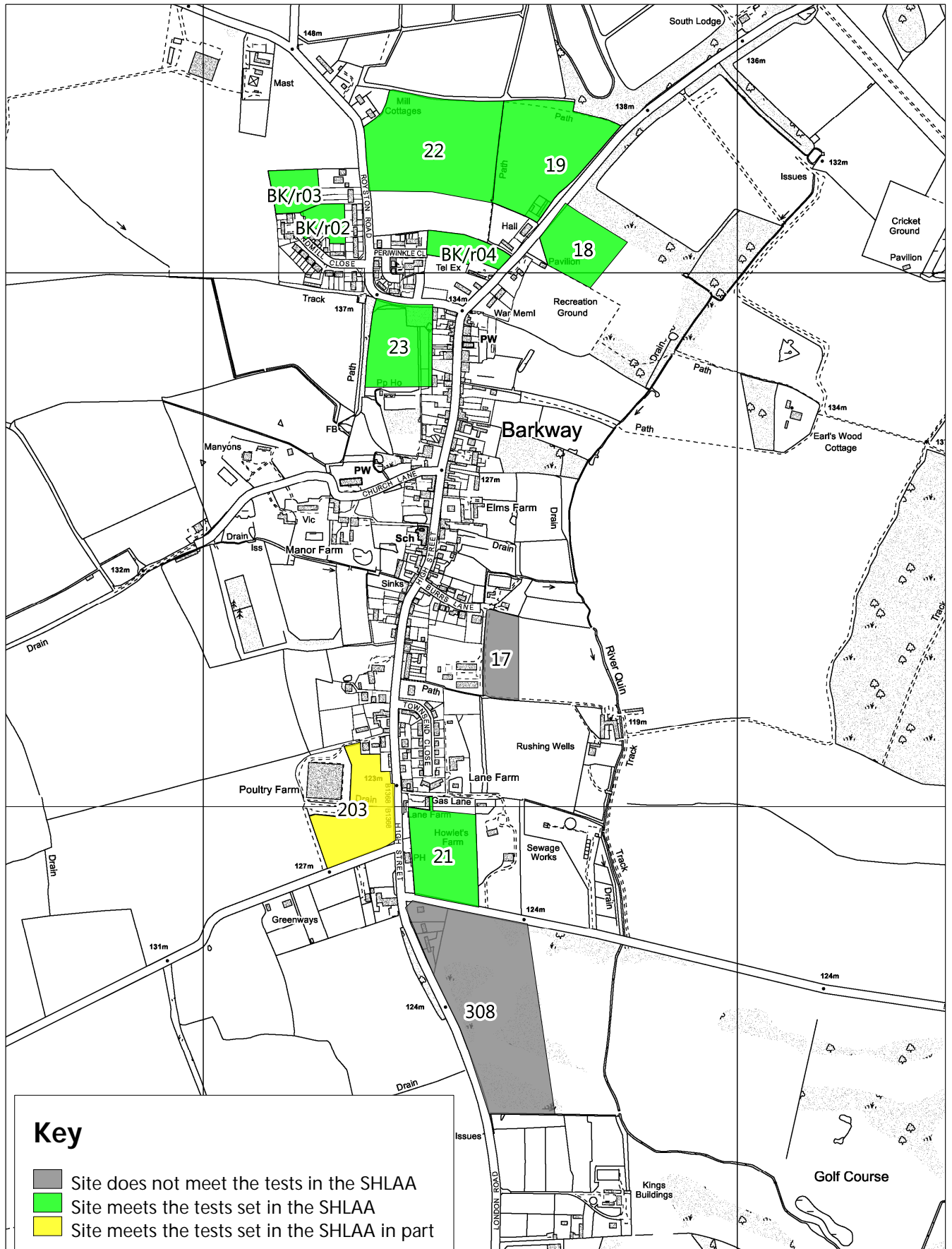


Key

- Site does not meet the tests in the SHLAA
- Site meets the tests set in the SHLAA
- Site meets the tests set in the SHLAA in part

Scale: 1:20000
Date:



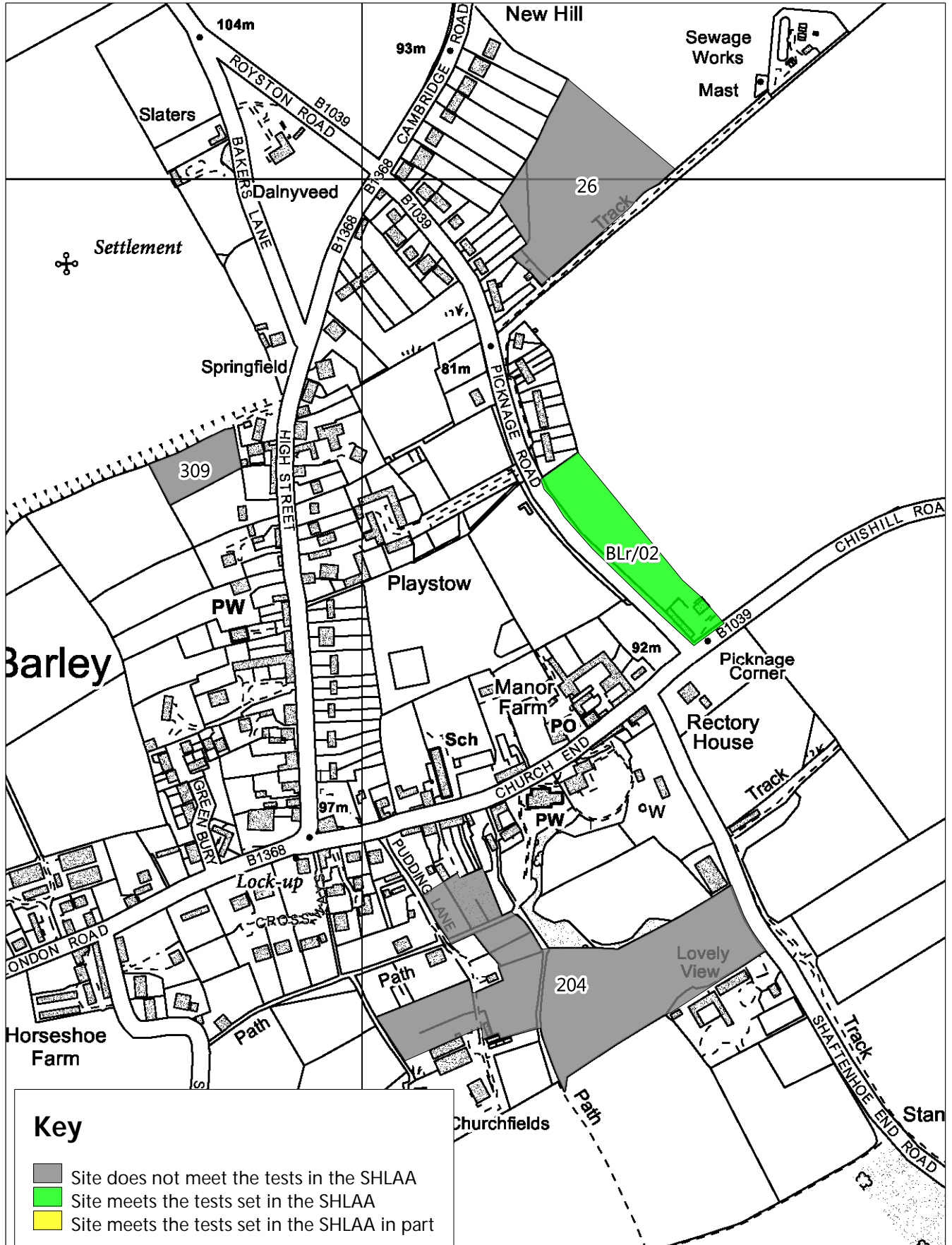


Key

- Site does not meet the tests in the SHLAA
- Site meets the tests set in the SHLAA
- Site meets the tests set in the SHLAA in part

Scale: 1:10000
Date:





Key

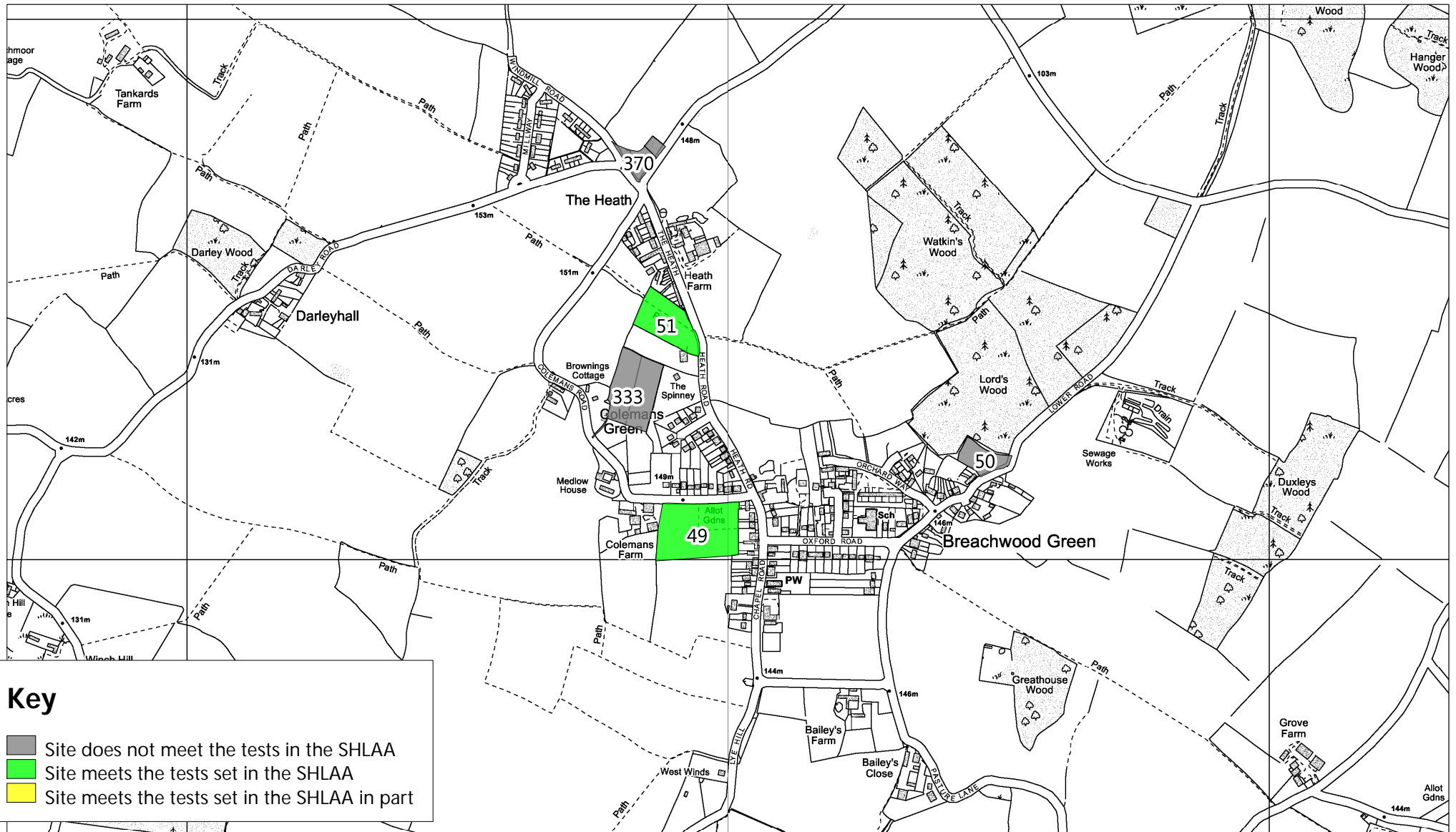
- Site does not meet the tests in the SHLAA
- Site meets the tests set in the SHLAA
- Site meets the tests set in the SHLAA in part

Scale: 1:5000
Date:





NHDC SHLAA Appendix 5 - Breachwood Green (Kings Walden)



Key

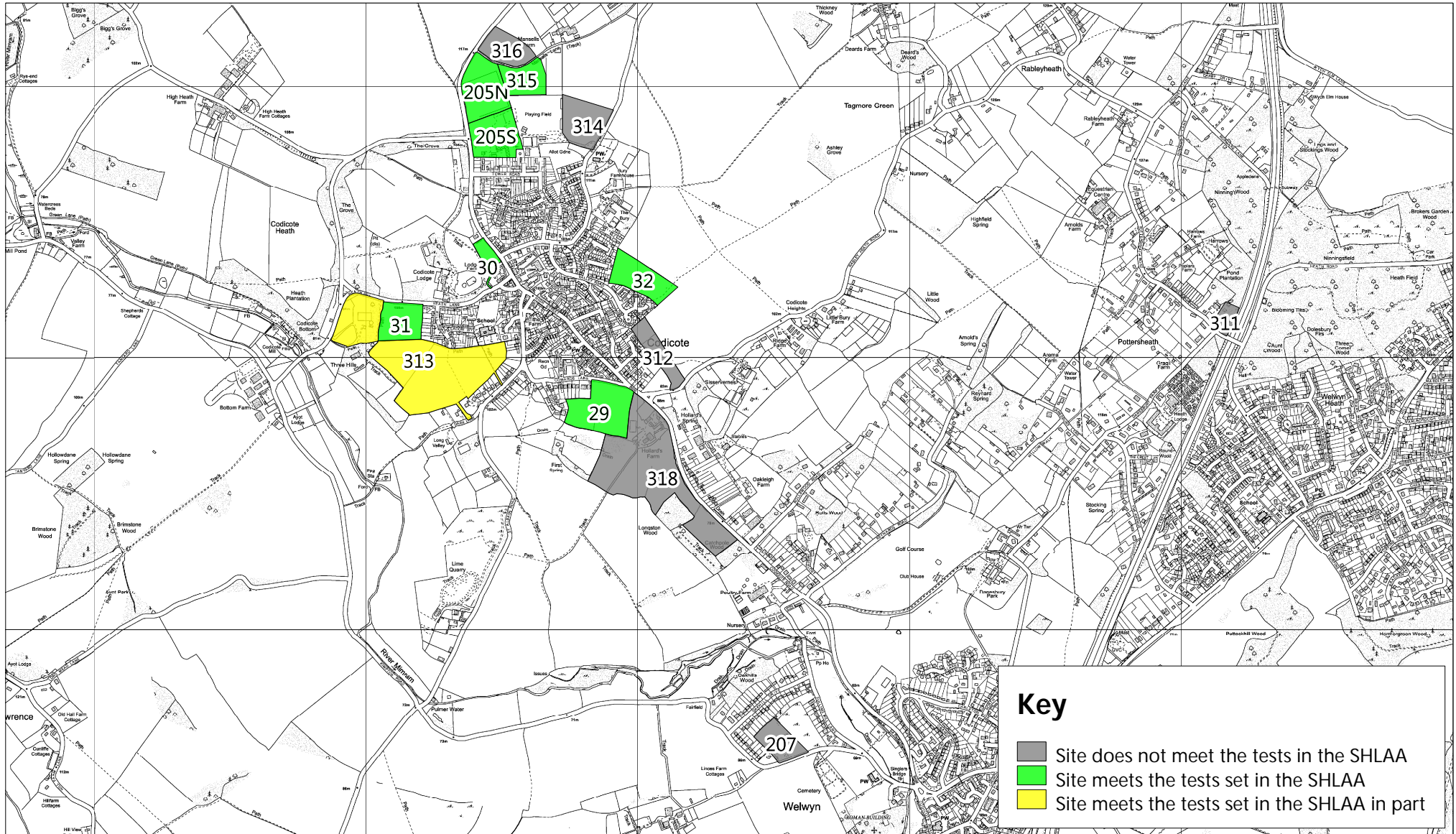
- Site does not meet the tests in the SHLAA
- Site meets the tests set in the SHLAA
- Site meets the tests set in the SHLAA in part

Scale: 1:10000
Date:





NHDC SHLAA Appendix 5 - Codicote



Key

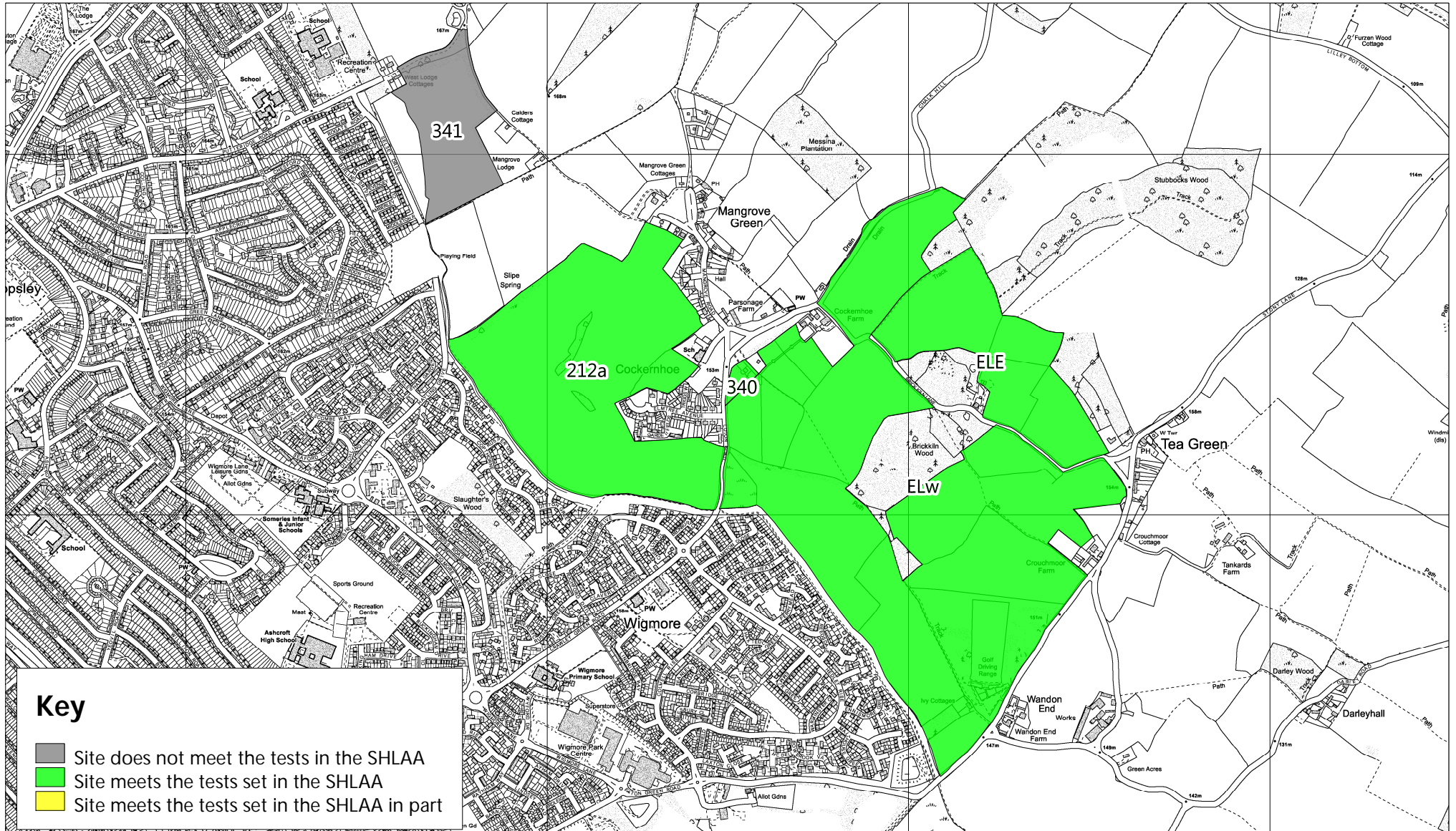
- Site does not meet the tests in the SHLAA
- Site meets the tests set in the SHLAA
- Site meets the tests set in the SHLAA in part

Scale: 1:20000
Date:



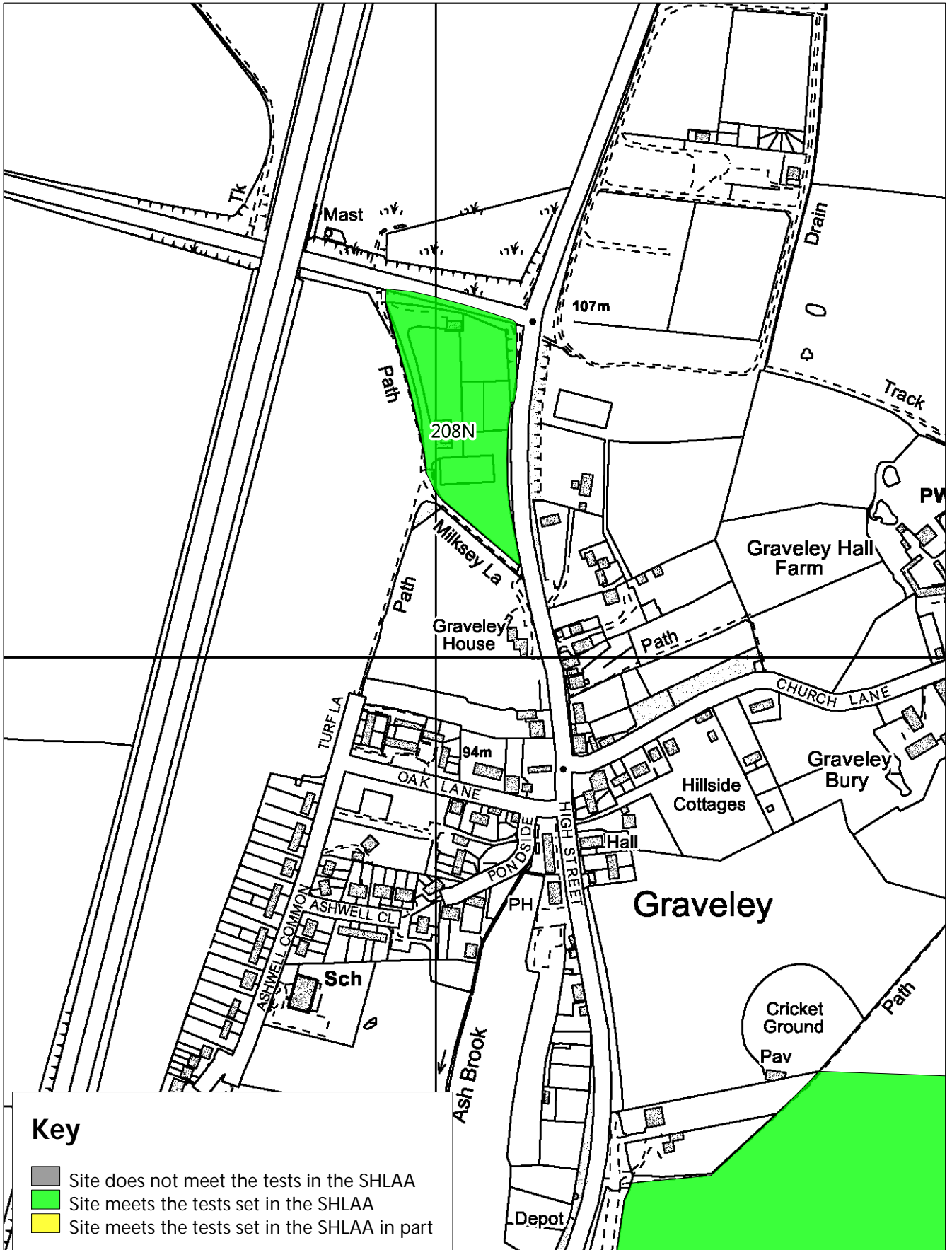


NHDC SHLAA Appendix 5 - East of Luton



Scale: 1:15000
Date:



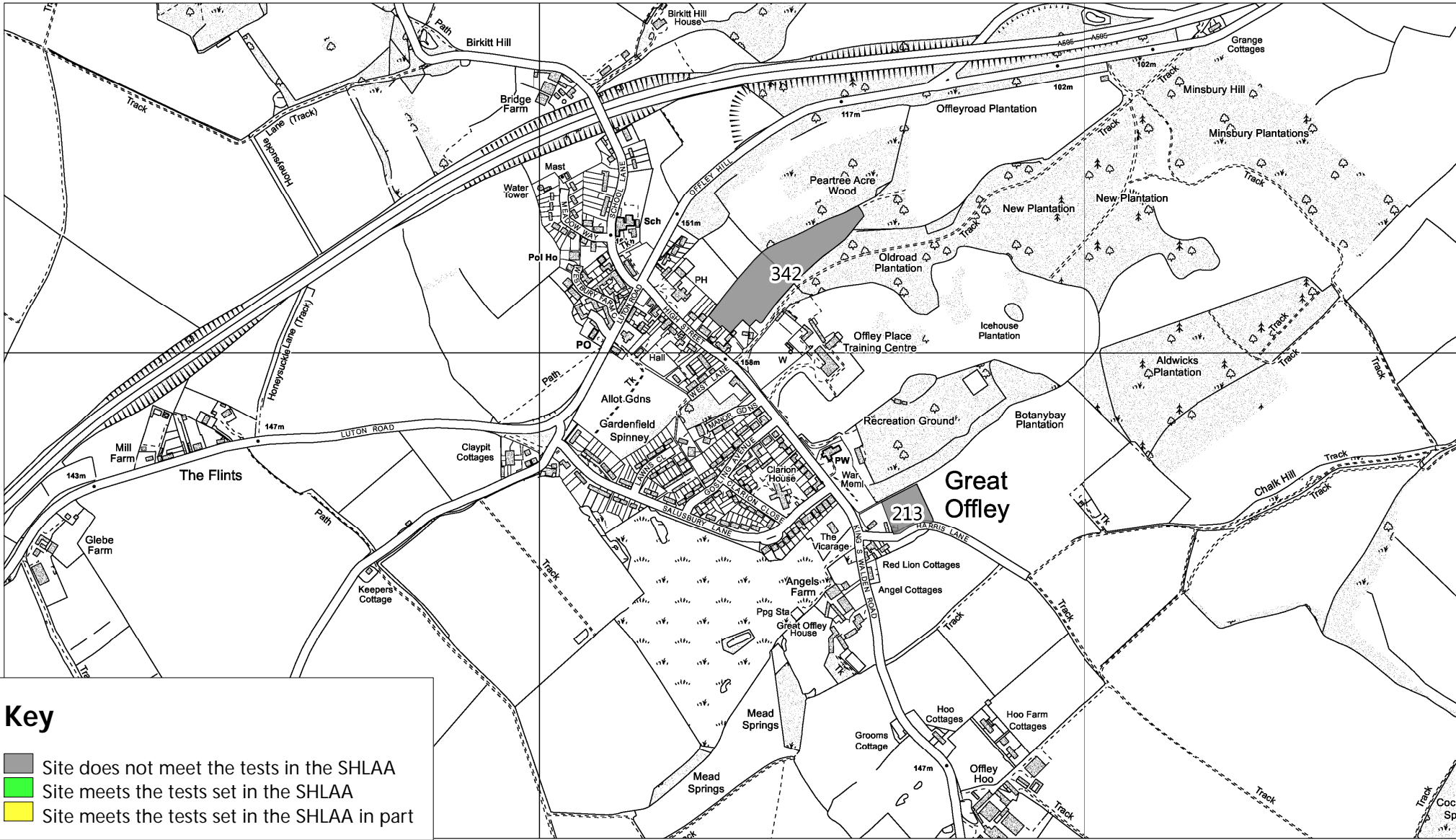


Scale: 1:5000
Date:





NHDC SHLAA Appendix 5 - Great Offley

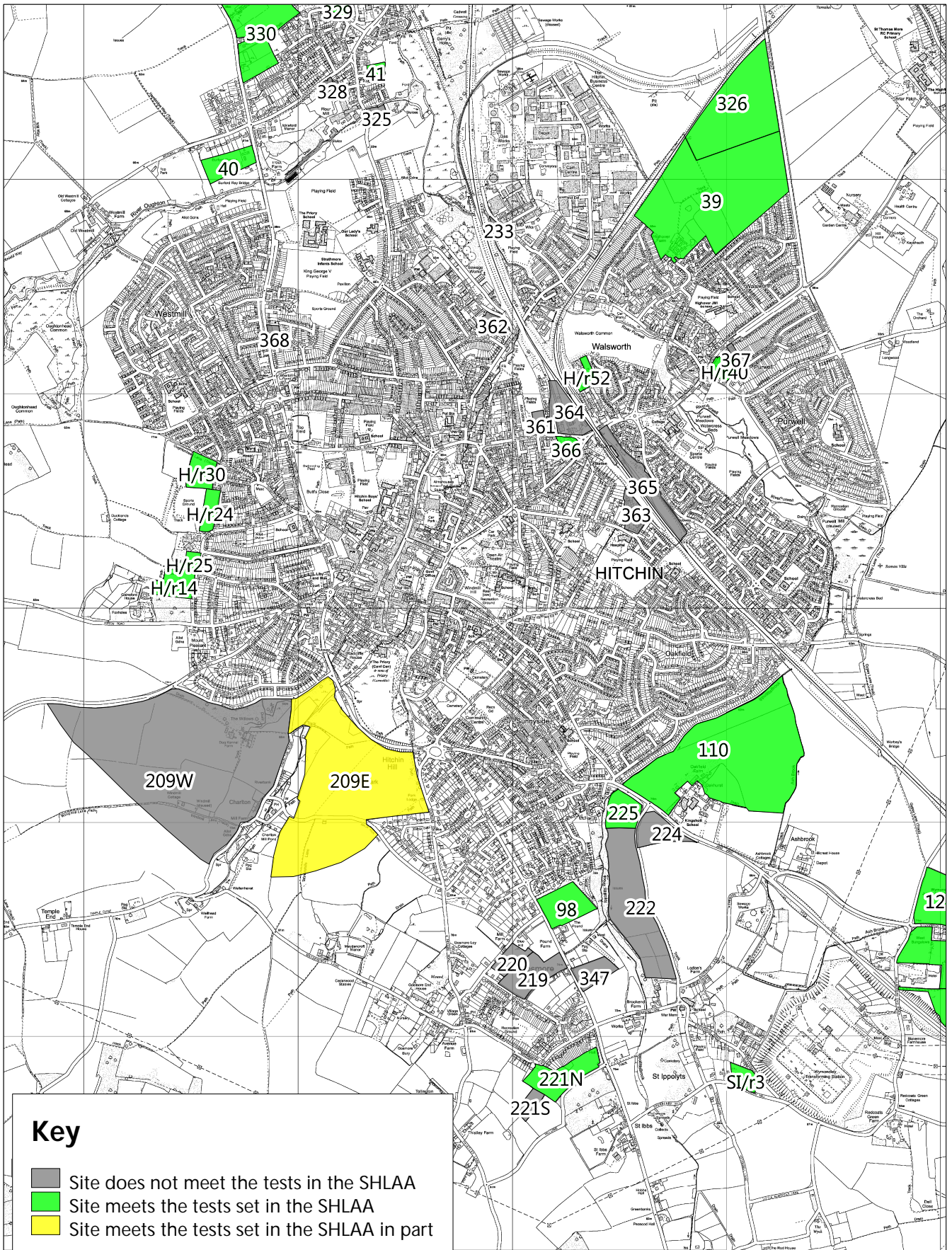


Key

- Site does not meet the tests in the SHLAA
- Site meets the tests set in the SHLAA
- Site meets the tests set in the SHLAA in part

Scale: 1:10000
 Date:



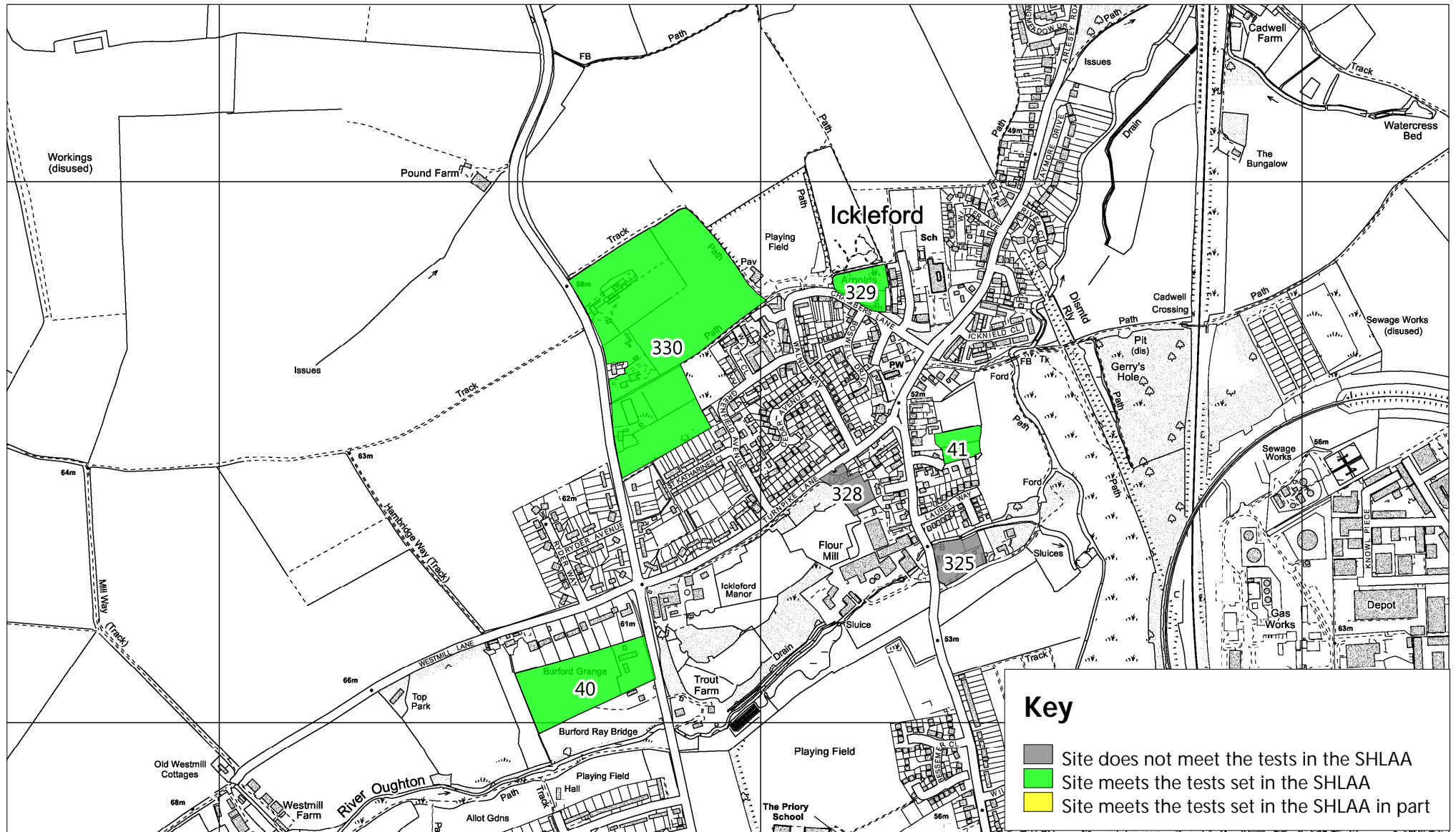


Scale: 1:25000
Date:





NHDC SHLAA Appendix 5 - Ickleford



Scale: 1:10000
Date:





NHDC SHLAA Appendix 5 - Kimpton



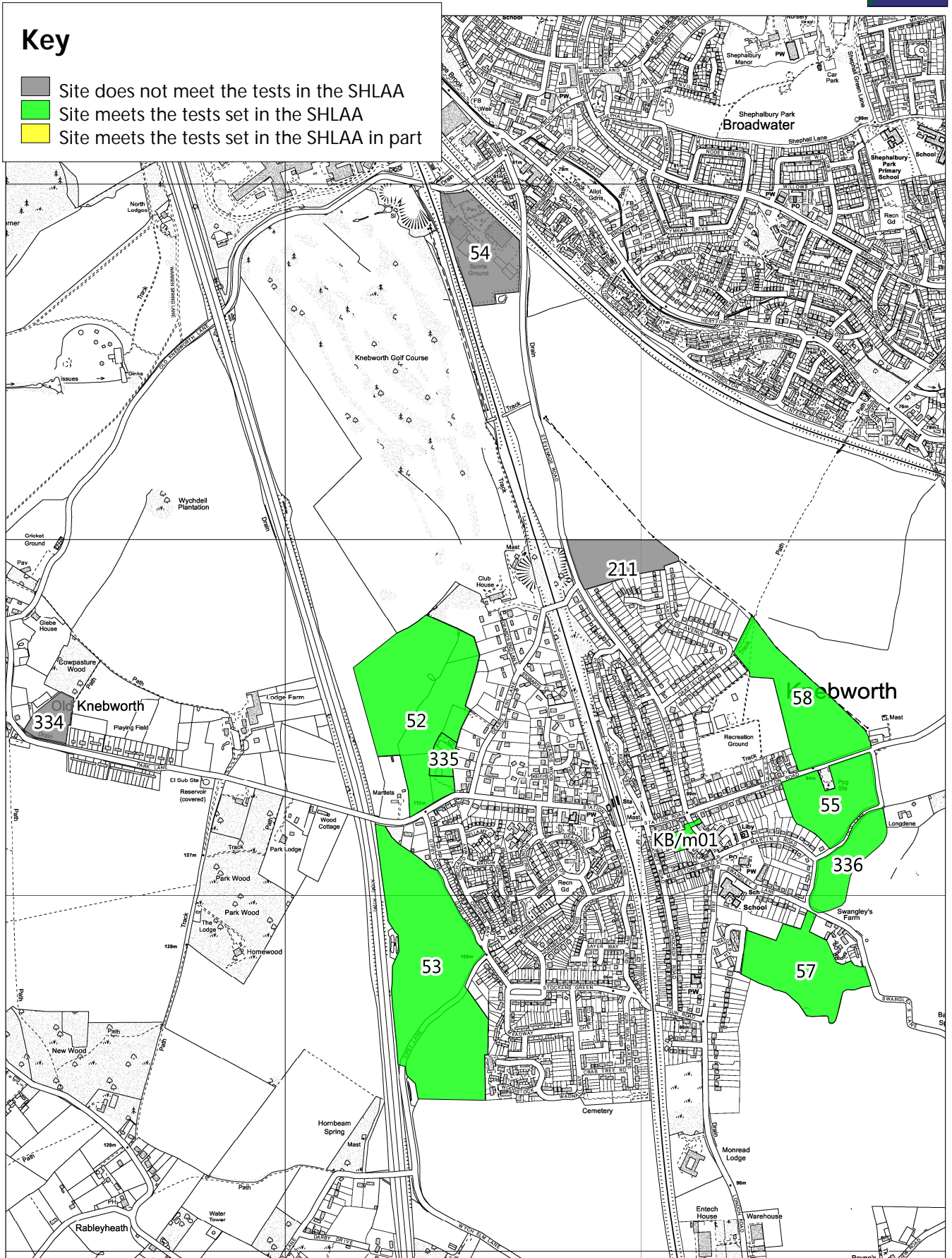
Scale: 1:10000
Date:





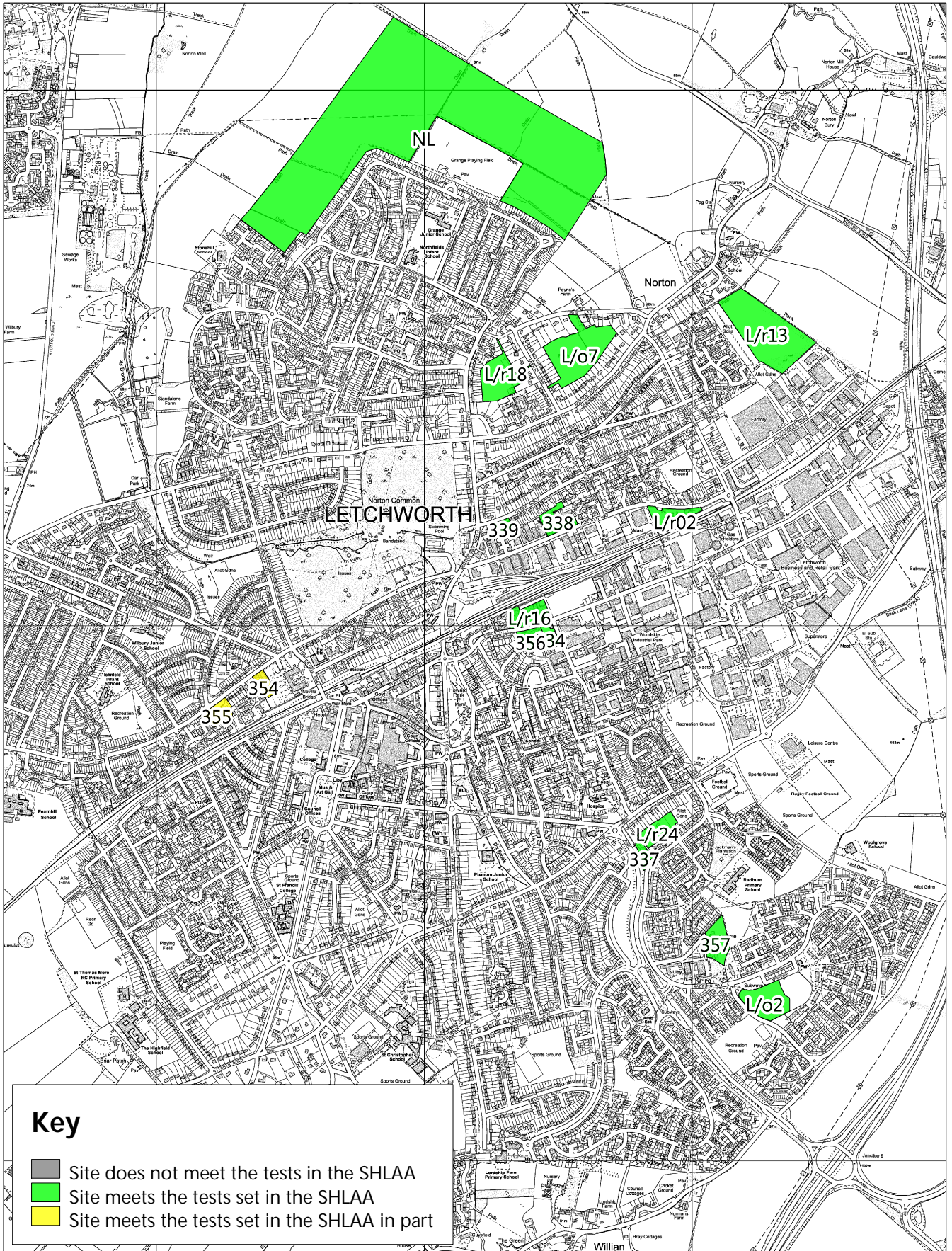
Key

- Site does not meet the tests in the SHLAA
- Site meets the tests set in the SHLAA
- Site meets the tests set in the SHLAA in part



Scale: 1:15000
Date:



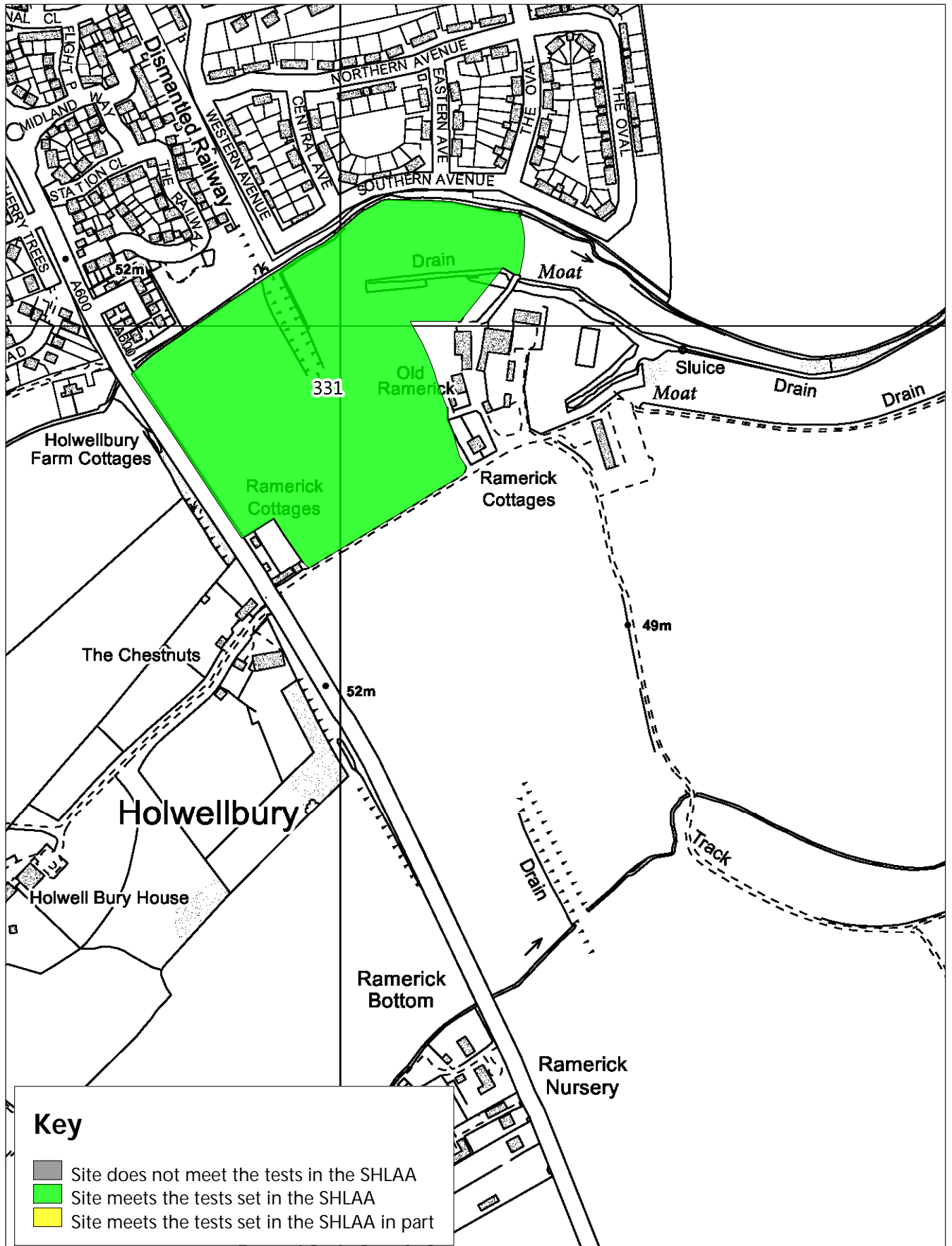


Key

- Site does not meet the tests in the SHLAA
- Site meets the tests set in the SHLAA
- Site meets the tests set in the SHLAA in part

Scale: 1:20000
Date:



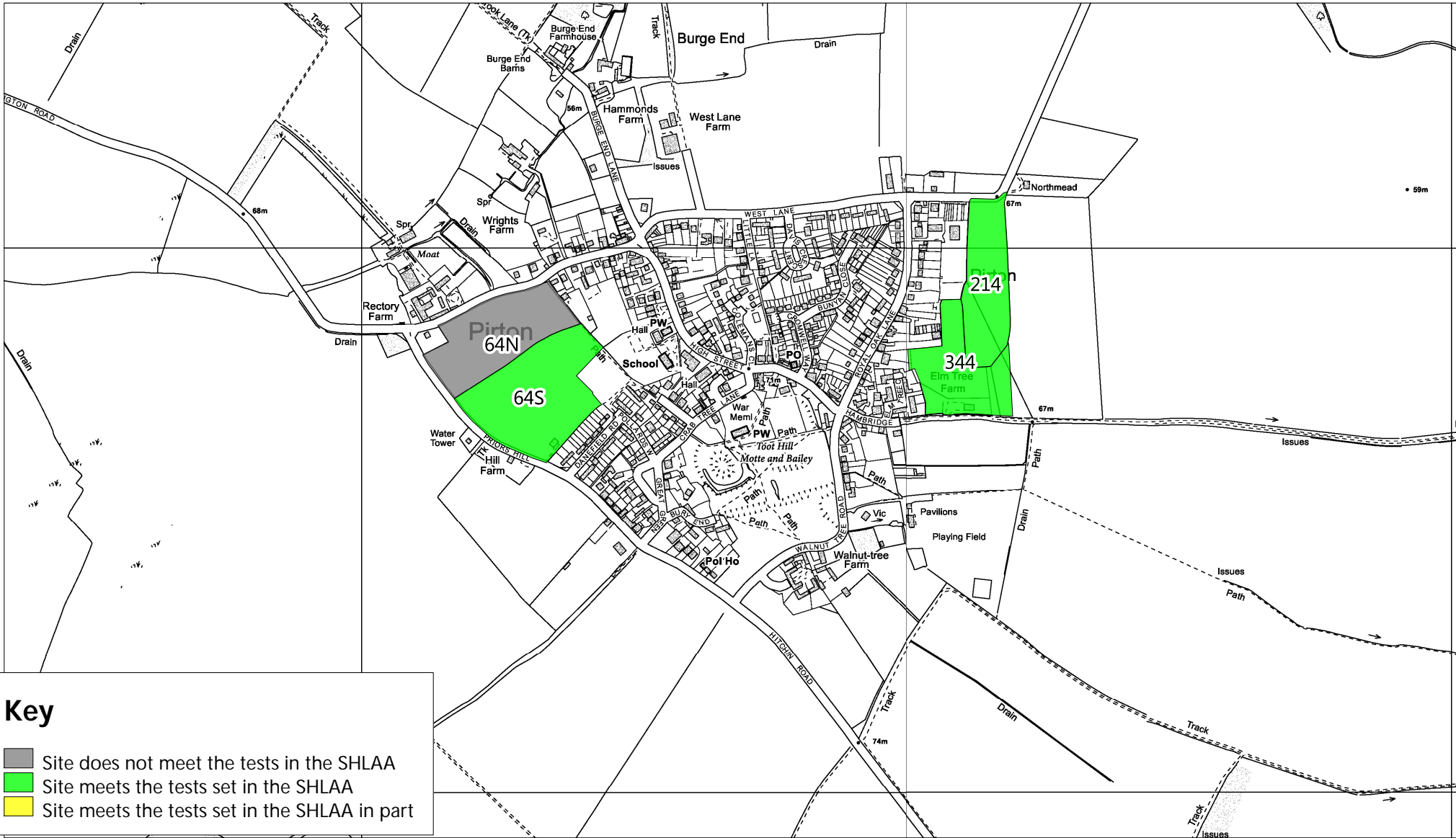


Scale: 1:5000
Date:





NHDC SHLAA Appendix 5 - Pirton

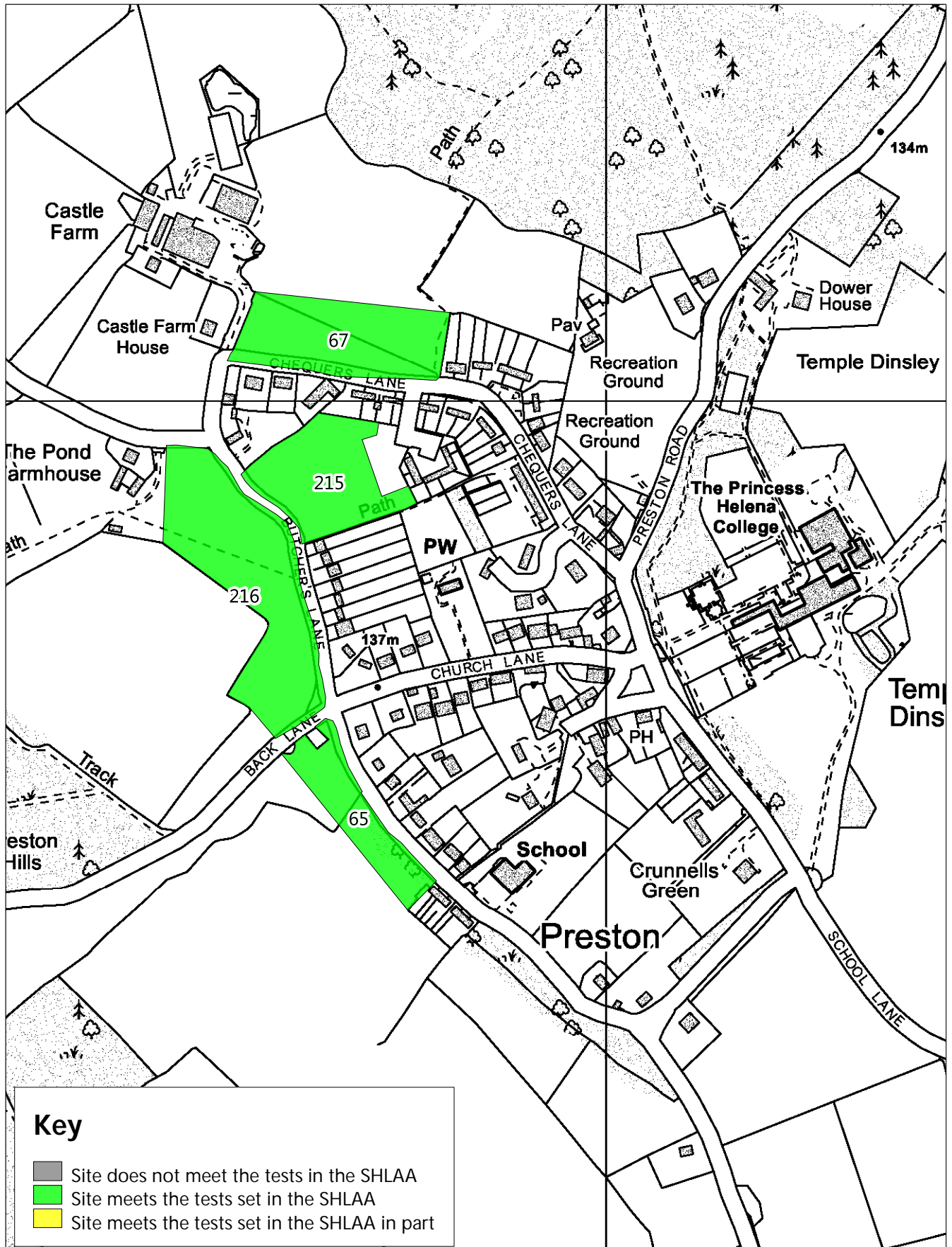


Key

- Site does not meet the tests in the SHLAA
- Site meets the tests set in the SHLAA
- Site meets the tests set in the SHLAA in part

Scale: 1:10000
Date:



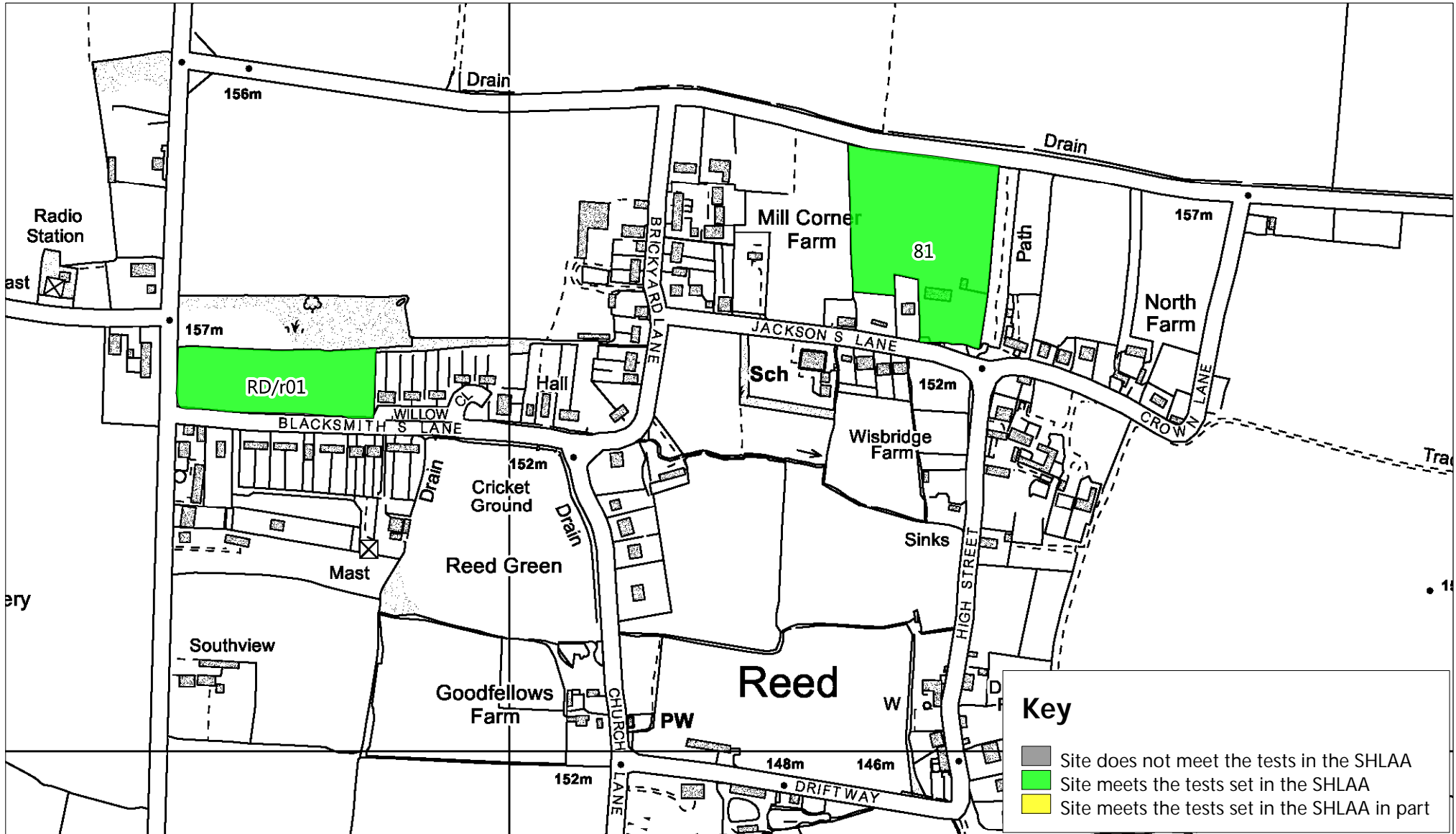


Scale: 1:5000
Date:





NHDC SHLAA Appendix 5 - Reed



Key

- Site does not meet the tests in the SHLAA
- Site meets the tests set in the SHLAA
- Site meets the tests set in the SHLAA in part

Scale: 1:5000
Date:

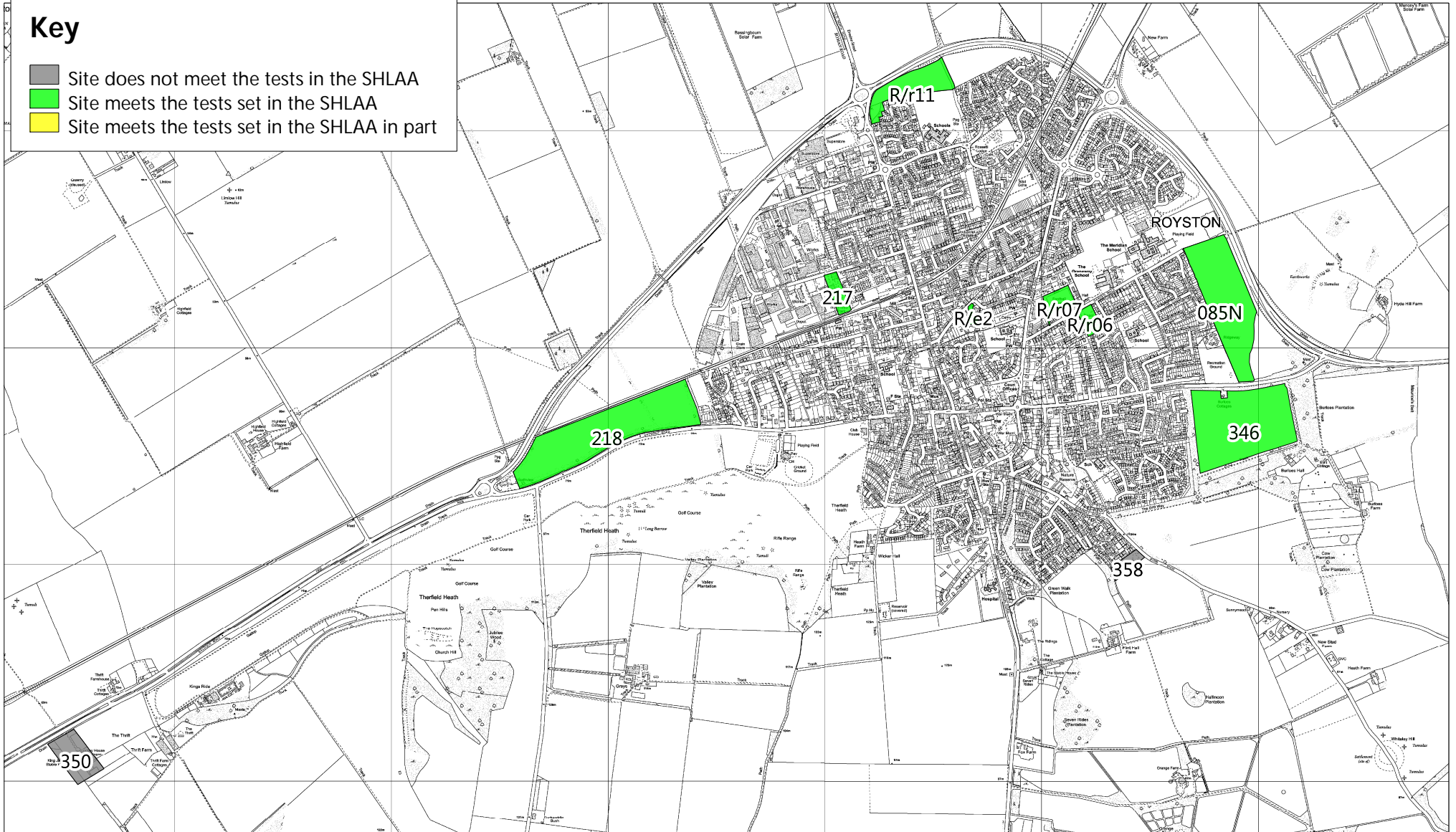




NHDC SHLAA Appendix 5 - Royston

Key

- Site does not meet the tests in the SHLAA
- Site meets the tests set in the SHLAA
- Site meets the tests set in the SHLAA in part

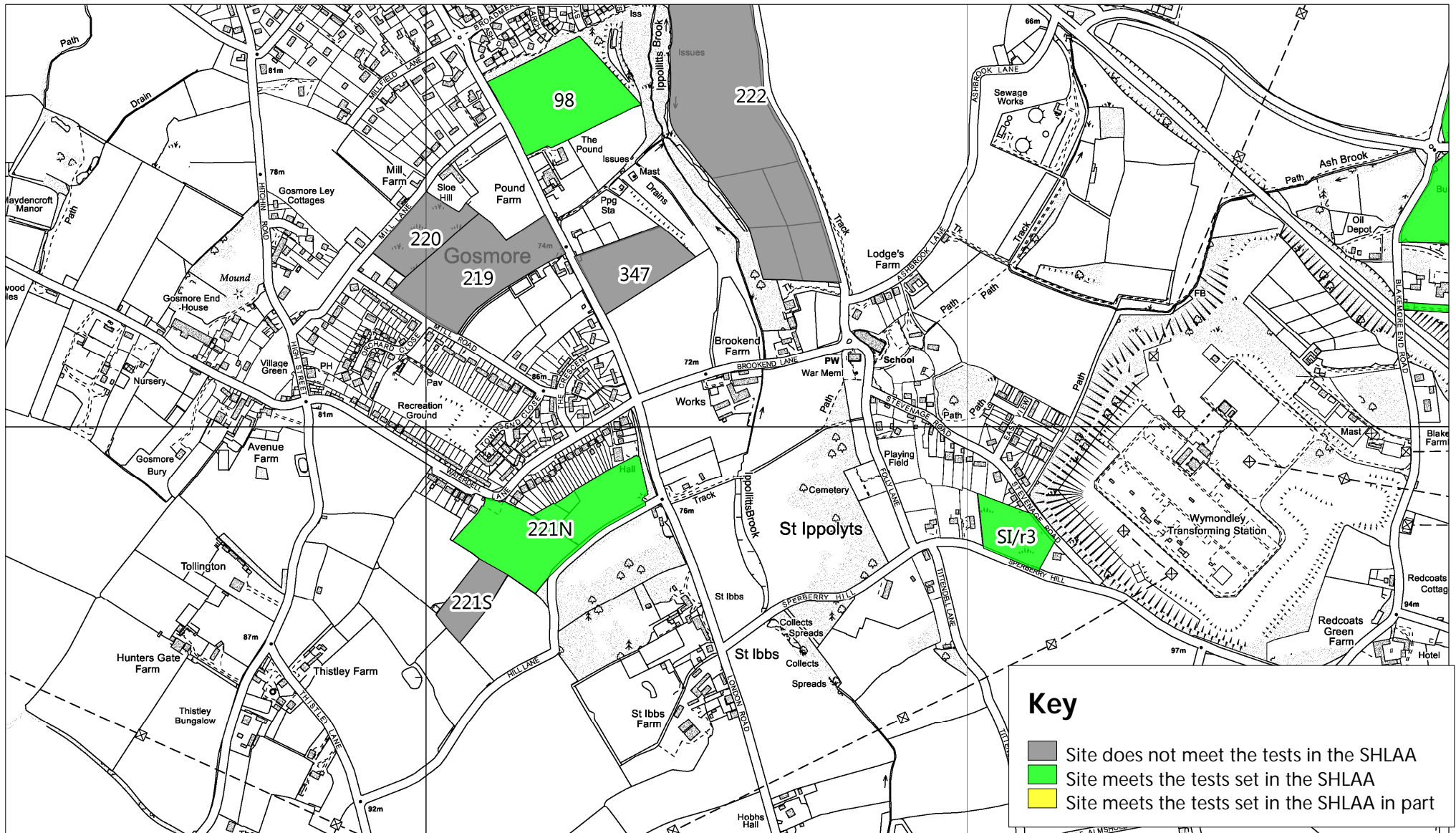


Scale: 1:24999
Date:





NHDC SHLAA Appendix 5 - St Ippolyts and Gosmore



Key

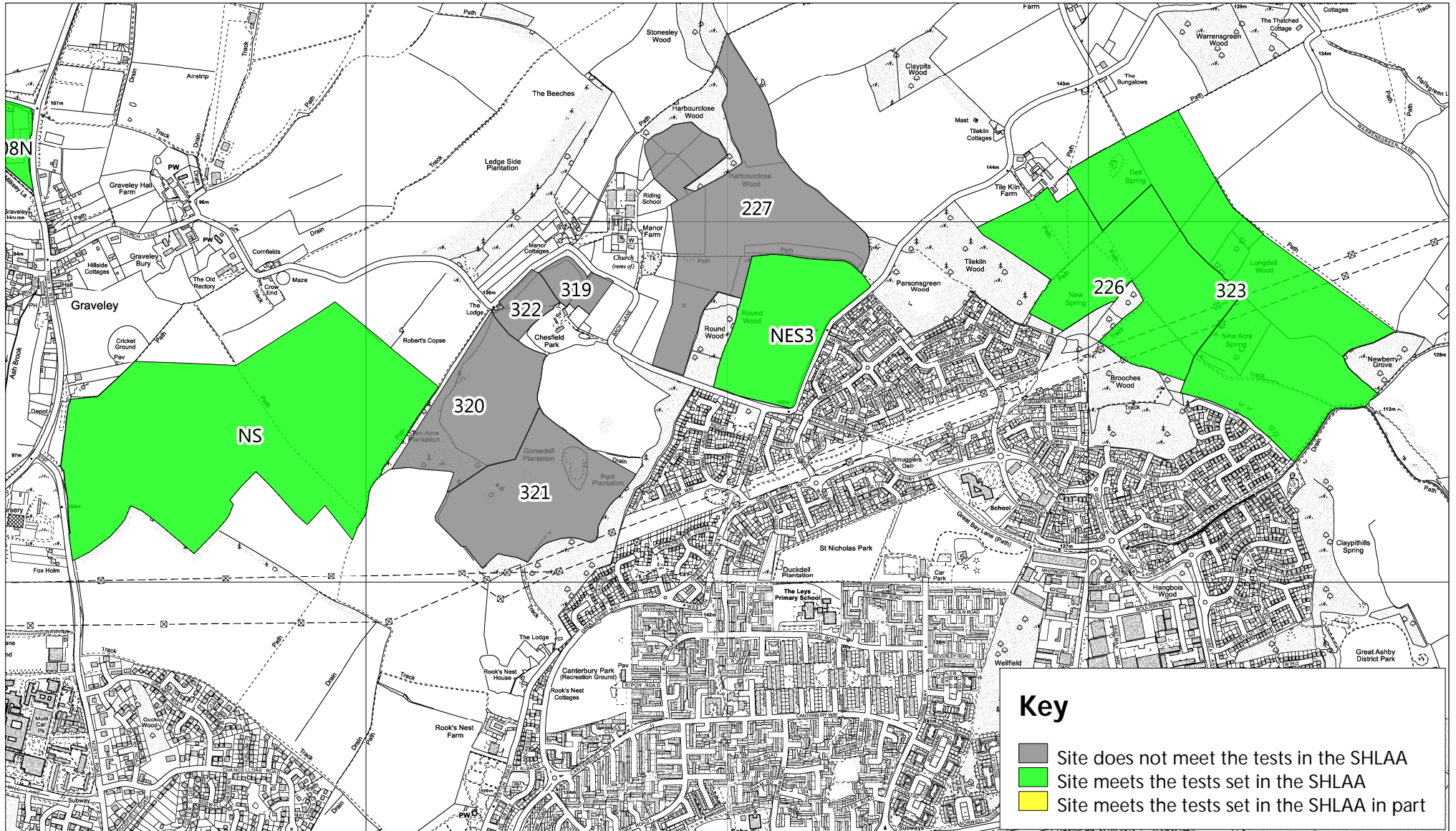
- Site does not meet the tests in the SHLAA
- Site meets the tests set in the SHLAA
- Site meets the tests set in the SHLAA in part

Scale: 1:10000
Date:





NHDC SHLAA Appendix 5 - North and North East Stevenage

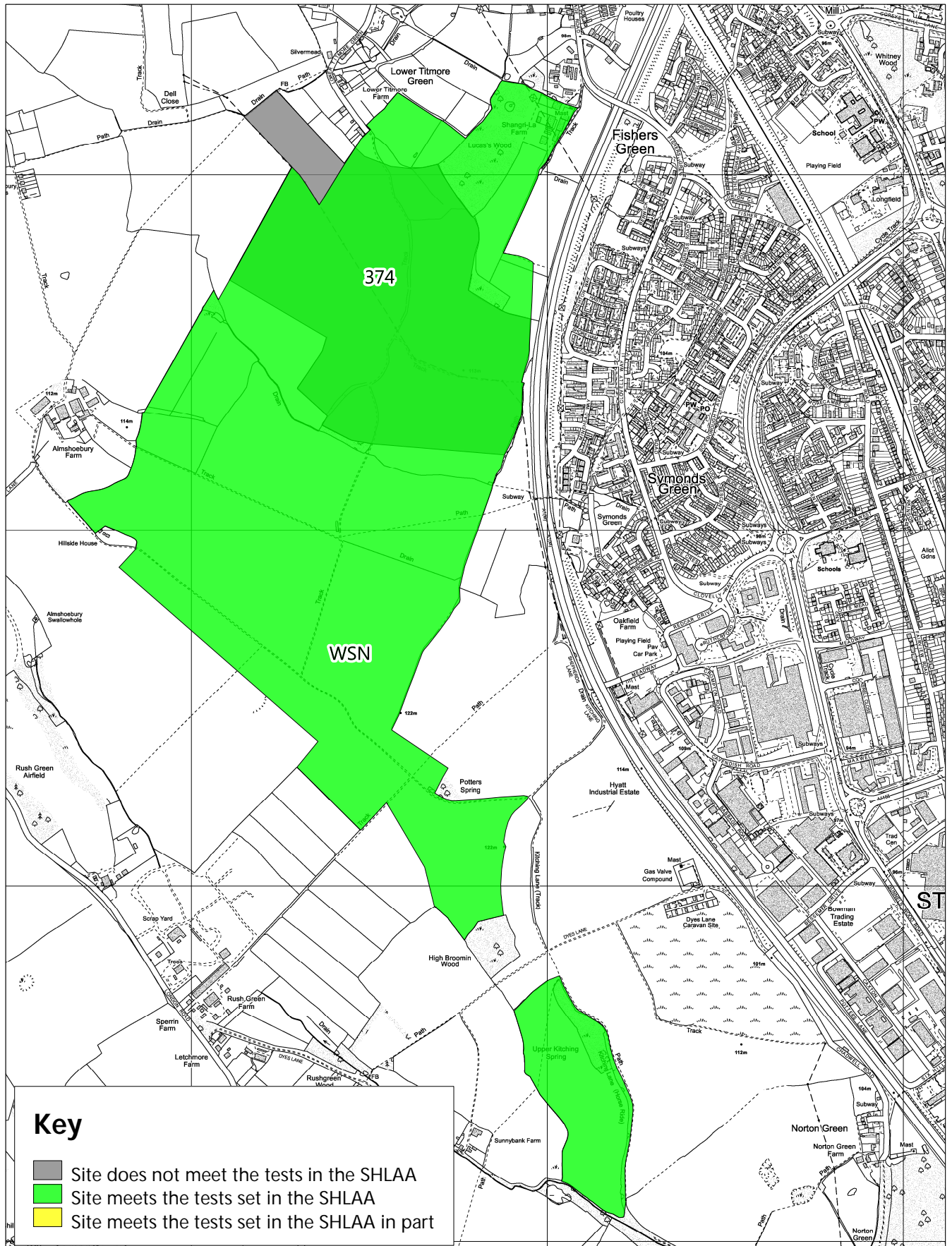


Key

- Site does not meet the tests in the SHLAA
- Site meets the tests set in the SHLAA
- Site meets the tests set in the SHLAA in part

Scale: 1:15000
Date:



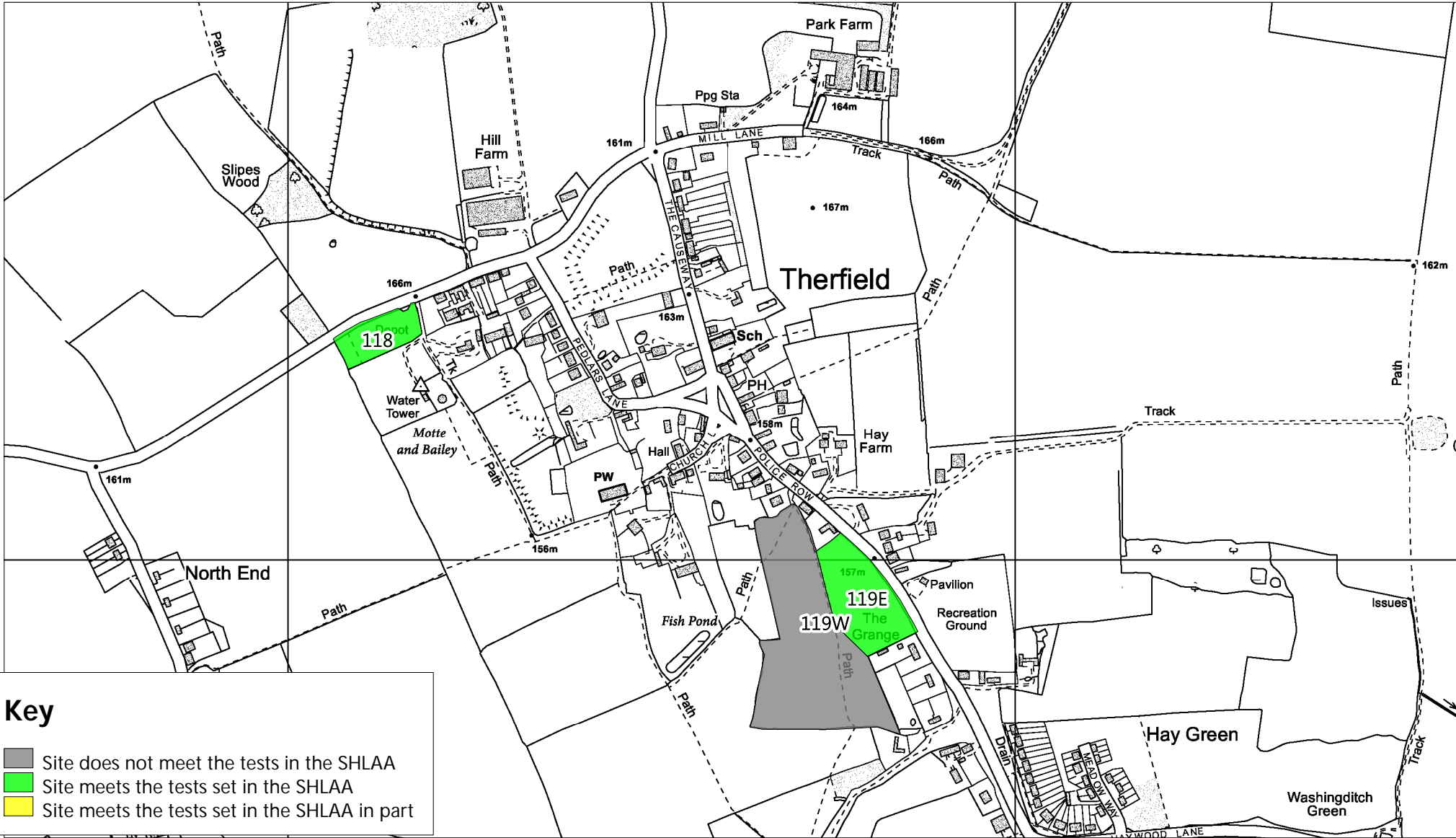


Scale: 1:15000
Date:





NHDC SHLAA Appendix 5 - Therfield



Key

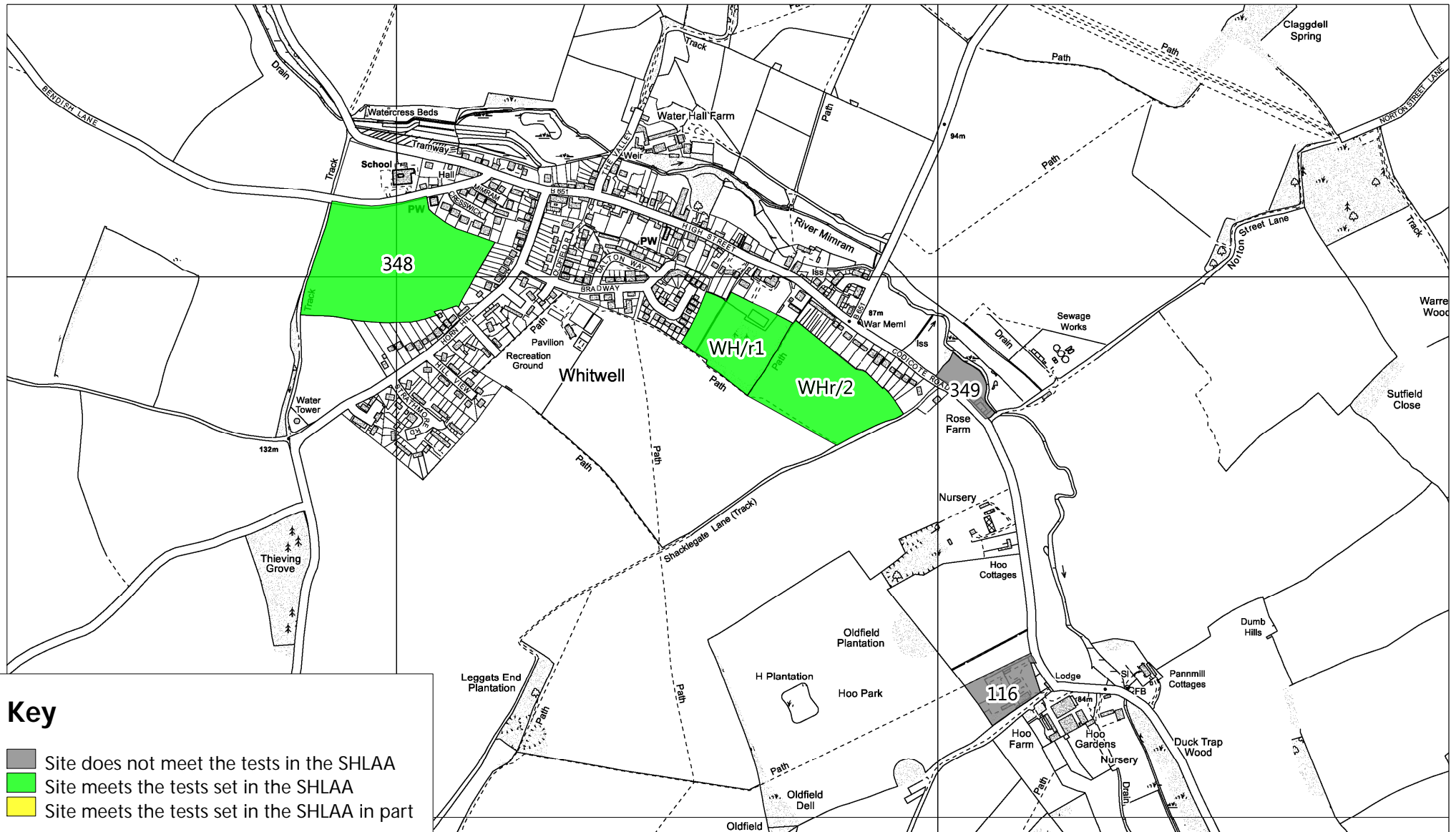
- Site does not meet the tests in the SHLAA
- Site meets the tests set in the SHLAA
- Site meets the tests set in the SHLAA in part

Scale: 1:7500
Date:





NHDC SHLAA Appendix 5 - Whitwell

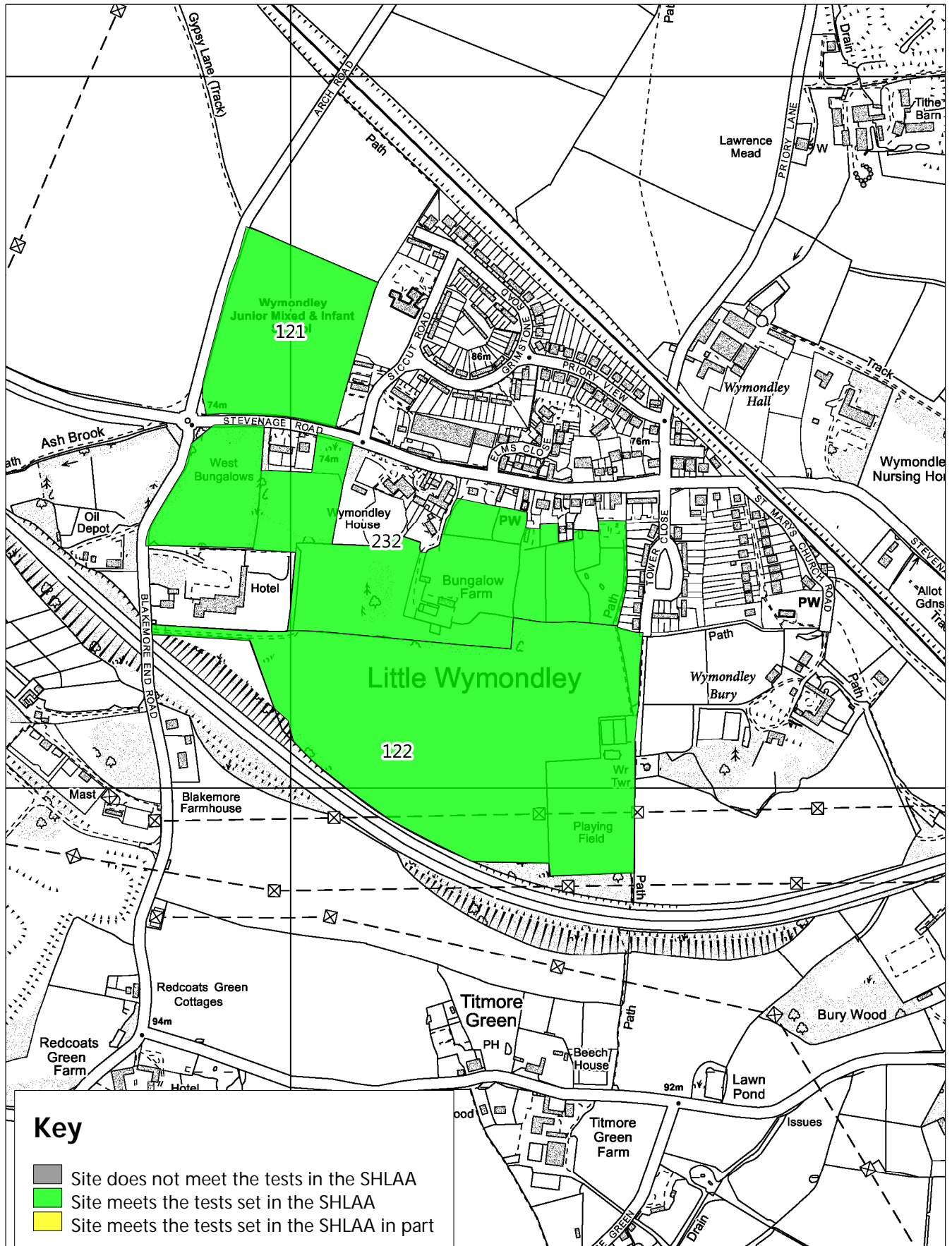


Key

- Site does not meet the tests in the SHLAA
- Site meets the tests set in the SHLAA
- Site meets the tests set in the SHLAA in part

Scale: 1:10000
Date:





Scale: 1:7500
Date:

